

GV-PoE Switch

GV-POE2401 User's Manual





© 2013 GeoVision, Inc. All rights reserved.

Under the copyright laws, this manual may not be copied, in whole or in part, without the written consent of GeoVision.

Every effort has been made to ensure that the information in this manual is accurate. GeoVision, Inc. makes no expressed or implied warranty of any kind and assumes no responsibility for errors or omissions. No liability is assumed for incidental or consequential damages arising from the use of the information or products contained herein. Features and specifications are subject to change without notice.

GeoVision, Inc.

9F, No. 246, Sec. 1, Neihu Rd.,

Neihu District, Taipei, Taiwan

Tel: +886-2-8797-8377

Fax: +886-2-8797-8335

<http://www.geovision.com.tw>

Trademarks used in this manual: *GeoVision*, the *GeoVision* logo and GV series products are trademarks of GeoVision, Inc. *Windows* and *Windows XP* are registered trademarks of Microsoft Corporation.

March 2013

Contents

1.	Safety Precautions	1
2.	Introduction.....	2
3.	Hardware Description	5
4.	Preparation for Web Configuration	8
5.	User Login	10
6.	Administrator	11
7.	Port Management	17
8.	VLAN Setting.....	22
9.	Per Port Counter	27
10.	QoS Setting	28
11.	Security	31
12.	Spanning Tree	33
13.	Trunking	37
14.	Backup / Recovery	39
15.	Miscellaneous	40
16.	Logout	43
17.	Restoring Default Settings.....	44
18.	Specifications.....	45

1. Safety Precautions

FCC Warning

This Equipment has been tested and found to comply with the limits for a Class-A digital device, pursuant to Part 15 of the FCC rules. These limits are designed to provide reasonable protection against harmful interference in a residential installation. This equipment generates, uses, and can radiate radio frequency energy. It may cause harmful interference to radio communications if the equipment is not installed and used in accordance with the instructions. However, there is no guarantee that interference will not occur in a particular installation. If this equipment does cause harmful interference to radio or television reception, which can be determined by turning the equipment off and on, the users are encouraged to try to correct the interference by one or more of the following measures:

- Reorient or relocate the receiving antenna.
- Increase the separation between the equipment and receiver.
- Connect the equipment into an outlet on a circuit different from that to which the receiver is connected.
- Consult the dealer or an experienced radio/TV technician for help.

CE Mark Warning

This is a Class-A product. In a domestic environment this product may cause radio interference in which case the users may be required to take adequate measures.

2. Introduction

Product Overview

The switch is a 24-port 10/100BaseTX with RJ-45 Connectors, PoE+ plus 2-port Gigabit Copper/SFP Combo Uplink Port Rack-mount Web Smart PoE Switch. The switch supports IEEE 802.3at Power over Ethernet standard, maximum 400 W power consumption per system and no special network cable required for connecting your powered devices (PD), such as IP cameras. The switch also provides exceptionally smart Web management features, such as VLAN, QoS, RSTP, IGMP Snooping, LACP, Port Security, etc. The switch is designed for medium or large network environment to strengthen its network connection and efficiency. It also gives you the option of installing it in a 19" cabinet with a rack mount kit or underneath a desk.

Key Features

Interface

- Number of Ports: 26
 - Fast Ethernet: 24-port 10/100BaseTX with RJ-45 Connectors, PoE+
 - Gigabit Ethernet: 2-port Gigabit Copper/SFP Combo Uplink Port

Performance

- MAC Address: Up to 4K
- Buffer Memory: 2.75 Mb
- Transmission Method: Store and Forward Mechanism

Software Feature Description

- Port Management
 - Port Configuration: Enable / Disable such as Link State, Speed / Duplex, Flow Control, Address Learning; Monitor Link Status
 - Port Mirroring: One to one, one to many, many to one mirroring
 - Bandwidth Control: Up to 256 levels Bandwidth Control for TX and RX Rate
 - Broadcast Storm Control: Broadcast Storm Control and Threshold Setting
 - PoE Control: PoE Enable / Disable, PoE Status

- Port Counter (Statistic): Monitor the port statistic
- VLAN Setting
 - VLAN Mode: Port-based and Tag-based VLAN
 - Port Based VLAN: Up to 10 ports Port-Based VLAN
 - Tag Based VLAN: Up to 32 VLANs, Available DID from 1~4094
- QoS Setting
 - Support High & Low Priority Queue
 - Priority Mode: First-In-First-Out, Strict and Weight-Round-Robin (WRR) Priority Mode
 - Class of Service schemes: 802.1p, IP TOS / DS or Port Base
 - TCP / UDP Port & Priority queue mapping
- Security Setting
 - Port Security - Port & MAC Address Binding, up to 3 MAC Address per port
 - TCP / UDP Filtering: Protocol Port Filter for secure WAN Port
- Spanning Tree Protocol
 - Version: Support Legacy Spanning Tree Protocol & Rapid Spanning Tree Protocol
 - Loopback Detection: Loopback detection to avoid network loop.
- Trunking
 - Trunking Type: Static Trunk or LACP
 - Trunk Group: 2 groups (1~4 port for each group)
 - LACP Long / Short Timeout time
- IGMP Snooping V1&V2
- Basic Features
 - Embedded HTTP web Management
 - User name / Password Authentication Configuration
 - Configuration Backup / Recovery
 - Secure Management

Package Contents

Before you start to install this switch, verify your package that contains the following items:

1. GV-POE2401 x 1



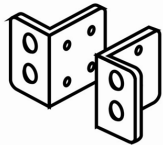
2. AC Power Cord x 1



3. Screw x 8



4. Rack Mount Kit x 1



5. User's Manual CD x 1



6. GV-POE2401 Quick Start Guide x 1

3. Hardware Description

This section mainly describes the hardware of the 24 PoE port Ethernet Combo Web-Smart Switch and gives a physical and functional overview on the certain switch.

Product Overview

Front Ethernet Ports

The front panel of the web smart switch consists of 24 10/100BaseTX RJ-45 ports and 2 combo Gigabit uplink RJ-45 / SFP ports. The LED Indicators are also located on the front panel.

Important:

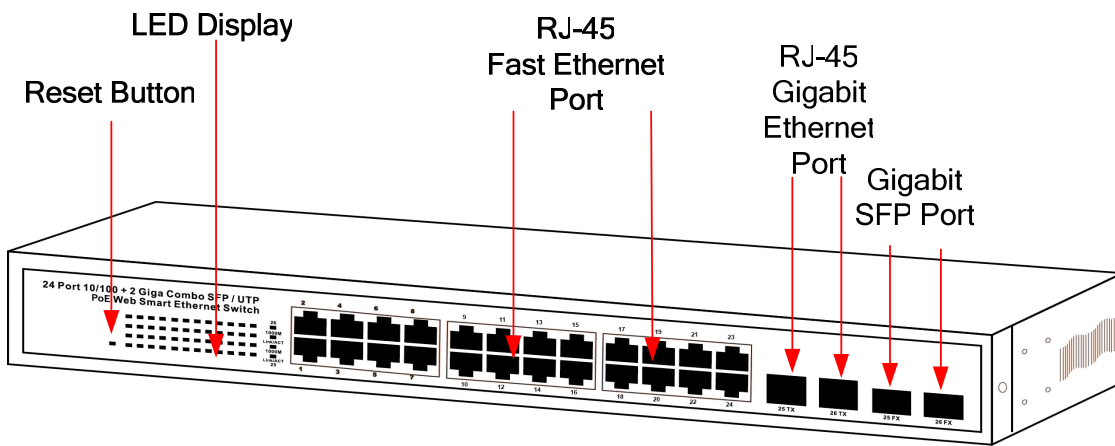
1. For the usage of RJ-45 Gigabit Ethernet and Gigabit SFP ports, you can only choose one port from group 1 (25TX and 25FX) and one port from group 2 (26TX and 26FX) to connect. Both groups offer one of their ports for connections at a time.
 2. The maximum cable length for RJ-45 Gigabit Ethernet is 100 meters. For connection that exceeds 100 meters, you can use the Gigabit SFP ports.
-

LED

The LED Indicators are also located on the front panel. They indicate the System and Port Status.

Reset Button

The button allows you to restore the configuration to default. For details see *17. Restoring Default Settings*.



Rear Panel

The 3-pronged power plug is placed at the rear panel of the switch right side shown as below.



LED Indicators

The LED Indicators present real-time information of systematic operation status. The following table provides description of LED status and their meaning.

No.	Color/Status	Description	No. of LED
Power	Amber On	Power on	Power
	Off	Power off	
Link/ ACT	Green On	Link Up	10/100 M (1~24) 1000 M (25~26)
	Green Blinking	Data is transmitting or receiving	
	Off	No connection	
PoE	Amber On	Port is linked to Power Device	10/100 M (1~24)
	Off	No Power Device is connected	

Hardware Installation

Set the switch on a large flat space with a power socket close by. The flat space should be clean, smooth, level and sturdy. Make sure there is enough clearance around the switch to allow attachment of cables, power cord and allow air circulation. The last, use twisted pair cable to connect this switch to your PC and then users could start to operate the switch.

AC Power Input

Connect the attached power cord to the AC power input connector; the available AC power input is range from 100-240 VAC.

Ethernet cable Request

The wiring cable types are as below.

10BaseT: 2-pair UTP/STP Cat. 3, 4, 5 cable, EIA / TIA-568 100-ohm (Max. 100 m)

100BaseTX: 2-pair UTP/STP Cat. 5 cable, EIA / TIA-568 100-ohm (Max. 100 m)

1000BaseT: 4-pair UTP/STP Cat. 5 cable, EIA / TIA-568 100-ohm (Max. 100 m)

PoE: To delivery power without problem, the Cat 5 / 5e and Cat 6 cable is suggested. The high quality Ethernet cable reduces the lost while power transmission.

SFP Installation

While install the SFP transceiver, make sure the SFP type of the 2 ends is the same and the transmission distance, wavelength, fiber cable can meet your request. The way to connect the SFP transceiver is to Plug in SFP fiber transceiver fist. The SFP transceiver has 2 plug for fiber cable, one is TX (transmit), the other is RX (receive). Cross-connect the transmit channel at each end to the receive channel at the opposite end.

4. Preparation for Web Configuration

The web management page allows you to use a standard web-browser such as Microsoft Internet Explorer, Google Chrome or Mozilla Firefox, to configure and interrogate the switch from anywhere on the network.

Before you attempt to use the web user interface to manage switch operation, verify that your switch is properly installed on your network and that every PC on this network can access the switch via the web browser.

Verify that your network interface card (NIC) is operational, and that your operating system supports TCP/IP protocol.

Wire the switch power and connect your computer to the switch. The switch default IP address is **192.168.0.250**. The switch and the connected PC should locate within the same IP Subnet.

Change your computer's IP address to 192.168.0.xxx or other IP address which is located in the 192.168.0.xxx (For example: IP Address: 192.168.0.2; Subnet Mask: 255.255.255.0) subnet.

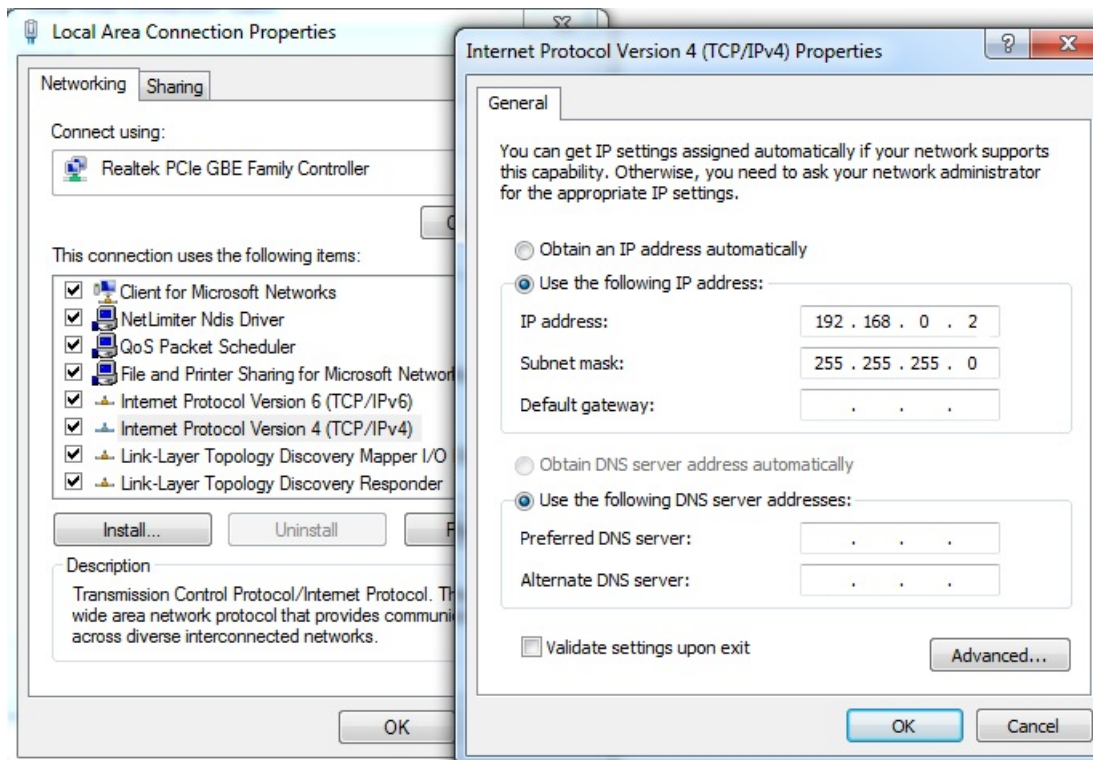


Figure 4-1

Launch the web browser and Login.

1. Launch the web browser (Internet Explorer or Mozilla Firefox) on the PC.
2. Type **http://192.168.0.250** (or the IP address of the switch). And then press **Enter**.
3. The login screen will appear.
4. Type the default user name and password: **admin**.

If you can't login the switch, the following steps can help you to identify the problem.

1. Switch to DOS command mode and type the "**ipconfig**" to check the NIC's setting. Type the "**ping 192.168.0.250**" to verify a normal response time.
2. Check the security or Firewall settings, high security level may limit the web access.
3. Try a different web browser, like the Mozilla or Google Chrome.

5. User Login

This part instructs users how to set up and manage the switch through the web user interface. Follow the description to understand the procedure.

At first, open the web browser, type **http://192.168.0.250** and then the users will see the login page. Type the default ID and password **admin** and click **OK** to pass the authentication. Once you are logged in, the main page will appear.

Login page

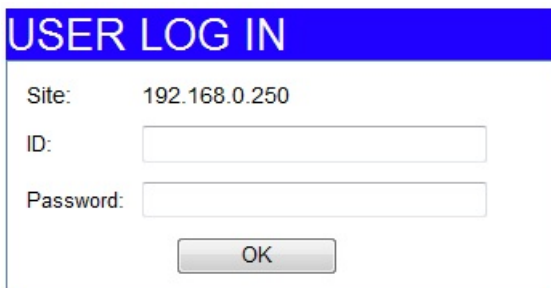


Figure 5-1

Main Page

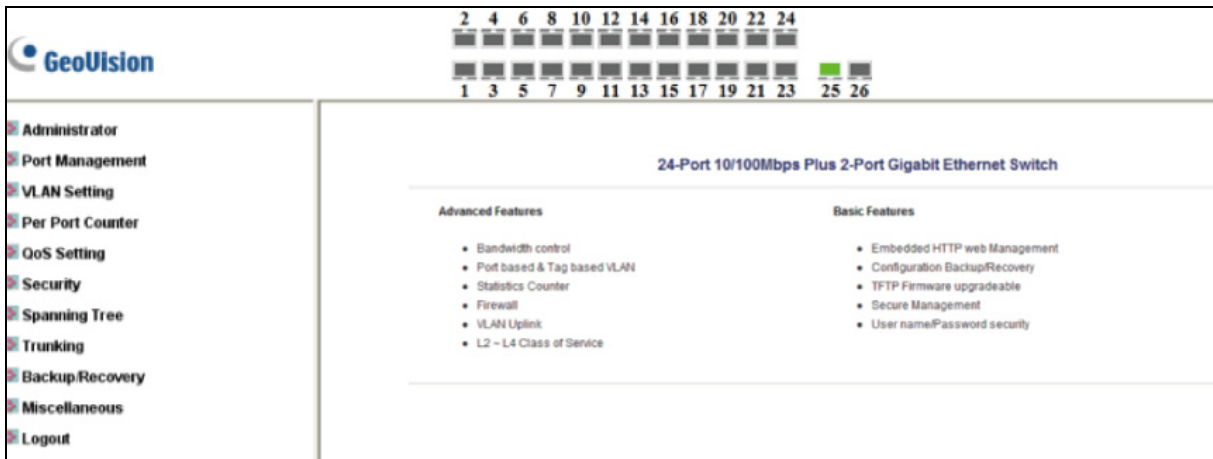


Figure 5-2

6. Administrator

Authentication Configuration

This page shows authentication configuration information. Users can set new Username and Password in this page.

Authentication Configuration

Setting	Value
Username	<input style="width: 100%;" type="text" value="admin"/> max:15
Password Confirm	<input style="width: 100%;" type="password" value="••••"/> max:15 <input style="width: 100%;" type="password" value="••••"/>
<input type="button" value="Update"/>	

Note:
Username & Password can only use "a-z","A-Z","0-9","_","+","-","=".

Figure 6-1

System IP Configuration

This page shows system configuration including the current IP address and sub-net mask and gateway.

Setting	Value
IP Address	<input style="width: 25px;" type="text" value="192"/> . <input style="width: 25px;" type="text" value="168"/> . <input style="width: 25px;" type="text" value="0"/> . <input style="width: 25px;" type="text" value="250"/>
Subnet Mask	<input style="width: 25px;" type="text" value="255"/> . <input style="width: 25px;" type="text" value="255"/> . <input style="width: 25px;" type="text" value="255"/> . <input style="width: 25px;" type="text" value="0"/>
Gateway	<input style="width: 25px;" type="text" value="192"/> . <input style="width: 25px;" type="text" value="168"/> . <input style="width: 25px;" type="text" value="2"/> . <input style="width: 25px;" type="text" value="254"/>
IP Configure	<input checked="" type="radio"/> Static <input type="radio"/> DHCP
<input type="button" value="Update"/>	

Figure 6-2

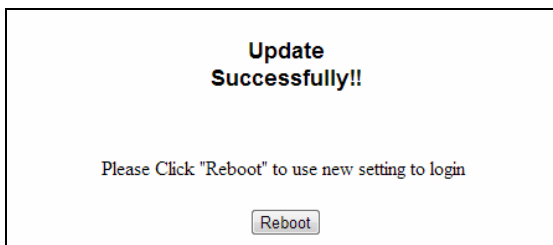
Users can configure the IP settings, Subnet Mask, Gateway as below:

- **IP address:** Manually assign the IP address that the network is using. The default IP is **192.168.0.250**.
- **Subnet Mask:** Assign the subnet mask to the IP address.
- **Gateway:** Assign the network gateway for industrial switch.
- **IP Configure:** Select the **Static** or **DHCP**.

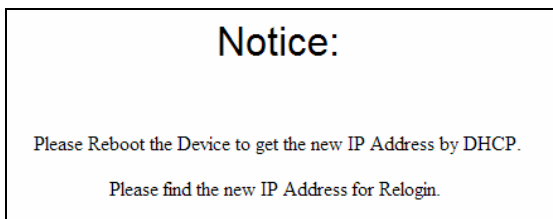
The default setting is **Static**. You can manually configure the IP Address settings.

Select **DHCP** mode means the switch acts as the **DHCP** client and the switch will try getting the IP Address from the DHCP server.

Click **Update** to update the new settings.



It will show **update successfully** and then press **Reboot** button. It will enter user login screen automatically.



Note: After changed to DHCP mode, the switch must be restarted to get new IP address.

However, since the switch only provide web management, it is hard for users to find its new IP. Don't try this mode without pre-configured DHCP setting in DHCP Server.

System Status

This page displays the information about the switch of MAC address, how many ports it has, system version and. Besides, users can also fill in up to 15 characters in the Comment, Contact and Location field for note.

System Status	
MAC Address	10:f0:13:f0:18:26
Number of Ports	8+2
Comment	<input type="text" value="switch"/> MAX:15
System Version	V110613
<input type="checkbox"/> Idle Time Security	Idle Time: <input type="text" value="0"/> (1~30 Minutes) <input type="radio"/> Auto Logout(Default). <input type="radio"/> Back to the last display.
<input type="button" value="Update"/>	

Note:
Comment name only can use "a-z","A-Z","_"," ","+","-","0-9"

Figure 6-3

- **MAC Address:** Displays the unique hardware address assigned by manufacturer (default).
- **Number of Ports:** Displays number of ports in the switch.
- **System Version:** Displays the switch’s firmware version.
- **Idle Time Security:** User can set the time security. When user leave the computer for a moment, the software will auto logout or back to the last display.

And then click **Update** button. The system may request you to restart the switch, follow the instruction.



Figure 6-4

Load Default Setting

Clicking the **Load** button will make the switch being set to the original configuration.



Load Default Setting

recover switch default setting excluding the IP address, Comment(in System Status), User name and Password

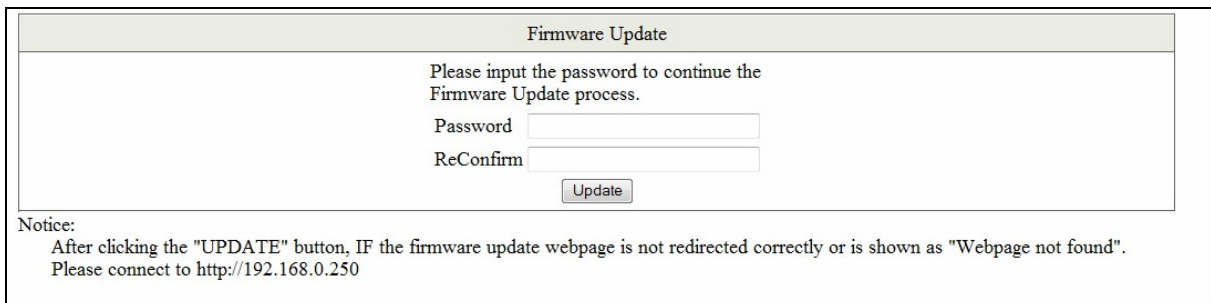
Load

Figure 6-5

Note: Loading default from the web interface does not include user name, password and IP configuration. If you want to restore default settings including IP, user name and password, you can press the **Reset** button on the front panel of the switch. For details, see *17 Loading Default Settings*.

Firmware Update

Before the firmware update procedure is executed, you should enter the password twice and then press **Update** button.



Firmware Update

Please input the password to continue the Firmware Update process.

Password

ReConfirm

Update

Notice:
After clicking the "UPDATE" button, IF the firmware update webpage is not redirected correctly or is shown as "Webpage not found".
Please connect to <http://192.168.0.250>

Figure 6-6

The popup warning window appears for making sure you want to proceed the firmware upgrading process. The flash memory and all functions will be disabled except the firmware update itself. Click **Yes** to continue. If not, click **Cancel**.

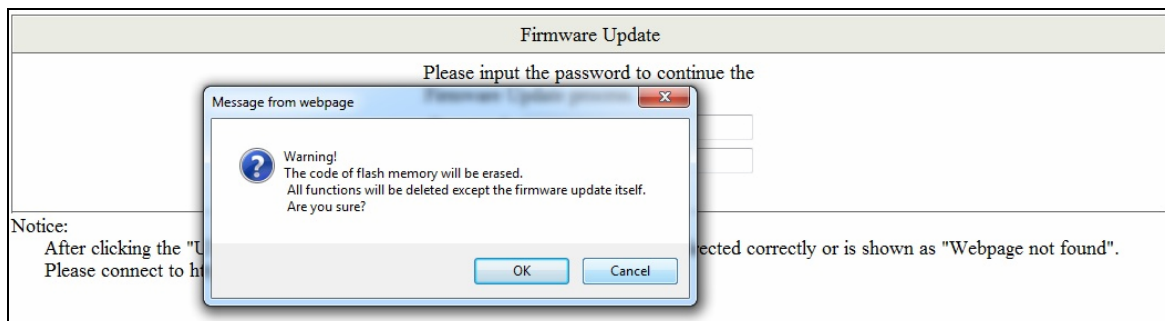


Figure 6-7

The smart switch will erase the flash memory. There is a self-protection mechanism in the Boot Loader, so the Boot Loader will keep intact. Even though the power is turned off or the cable link fails during the firmware update procedure, the Boot Loader will restore the code to firmware update page.

After pressing **Update** button, the old web code will be erased. Then you can click **Browse** to select the image file (.bin).

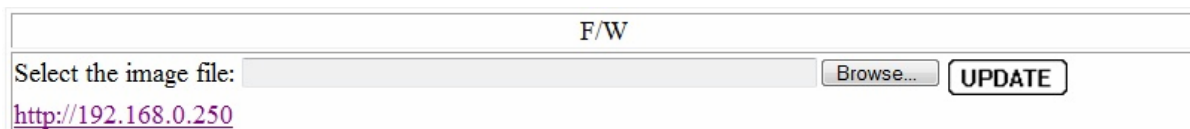


Figure 6-8

After selected the image file, the place right of the Browse command will display the file name you selected. Press **Update** to continue the firmware upgrading process.

7. Port Management

Port Management includes Port Configuration, Port Mirroring, Bandwidth Control, Broadcast Storm Control and PoE.

Port Configuration

In Port Configuration, you can set and view the operation mode for each port.

Port Configuration												
Function	Tx/Rx Ability		Auto-Negotiation		Speed	Duplex	Pause	Backpressure	Addr. Learning			
Select Port No.	<input type="checkbox"/> 01 <input type="checkbox"/> 02 <input type="checkbox"/> 03 <input type="checkbox"/> 04 <input type="checkbox"/> 05 <input type="checkbox"/> 06 <input type="checkbox"/> 07 <input type="checkbox"/> 08 <input type="checkbox"/> 09 <input type="checkbox"/> 10 <input type="checkbox"/> 11 <input type="checkbox"/> 12 <input type="checkbox"/> 13 <input type="checkbox"/> 14 <input type="checkbox"/> 15 <input type="checkbox"/> 16 <input type="checkbox"/> 17 <input type="checkbox"/> 18 <input type="checkbox"/> 19 <input type="checkbox"/> 20 <input type="checkbox"/> 21 <input type="checkbox"/> 22 <input type="checkbox"/> 23 <input type="checkbox"/> 24 <input type="checkbox"/> 25 <input type="checkbox"/> 26											
(None)												
Port	Current Status					Setting Status						
	Link	Speed	Duplex	FlowCtrl	Tx/Rx Ability	Auto-Nego	Speed	Duplex	Pause	Backpressure	Addr. Learning	
1	---	---	---	---	ON	AUTO	100M	FULL	ON	ON	OFF	
2	---	---	---	---	ON	AUTO	100M	FULL	ON	ON	OFF	
3	---	---	---	---	ON	AUTO	100M	FULL	ON	ON	OFF	
4	---	---	---	---	ON	AUTO	100M	FULL	ON	ON	OFF	
5	---	---	---	---	ON	AUTO	100M	FULL	ON	ON	OFF	
6	---	---	---	---	ON	AUTO	100M	FULL	ON	ON	OFF	
7	---	---	---	---	ON	AUTO	100M	FULL	ON	ON	OFF	
8	---	---	---	---	ON	AUTO	100M	FULL	ON	ON	OFF	
9	---	---	---	---	ON	AUTO	100M	FULL	ON	ON	OFF	
10	---	---	---	---	ON	AUTO	100M	FULL	ON	ON	OFF	
11	---	---	---	---	ON	AUTO	100M	FULL	ON	ON	OFF	
12	---	---	---	---	ON	AUTO	100M	FULL	ON	ON	OFF	
13	---	---	---	---	ON	AUTO	100M	FULL	ON	ON	OFF	
14	---	---	---	---	ON	AUTO	100M	FULL	ON	ON	OFF	
15	---	---	---	---	ON	AUTO	100M	FULL	ON	ON	OFF	
16	---	---	---	---	ON	AUTO	100M	FULL	ON	ON	OFF	
17	---	---	---	---	ON	AUTO	100M	FULL	ON	ON	OFF	
18	---	---	---	---	ON	AUTO	100M	FULL	ON	ON	OFF	
19	---	---	---	---	ON	AUTO	100M	FULL	ON	ON	OFF	
20	●	100M	FULL	ON	ON	AUTO	100M	FULL	ON	ON	ON	
21	---	---	---	---	ON	AUTO	100M	FULL	ON	ON	OFF	
22	---	---	---	---	ON	AUTO	100M	FULL	ON	ON	OFF	
23	---	---	---	---	ON	AUTO	100M	FULL	ON	ON	OFF	
24	---	---	---	---	ON	AUTO	100M	FULL	ON	ON	OFF	
25	---	---	---	---	ON	AUTO	1G	FULL	ON	ON	OFF	
26	---	---	---	---	ON	AUTO	1G	FULL	ON	ON	OFF	

Figure 7-1

- **Function:**
 - **TX / RX-Ability: Enable or Disable.** The default value is **Enable**. Being set as **Enable**, the port can Transmit and Receive packet without any problem. After changed to **Disable**, the selected ports can access the network any more.
 - **Auto-Negotiation: Enable and Disable.** Being set as **Enable**, the Speed, Duplex mode, Pause, Backpressure, TX Capability and Address Learning are negotiated automatically. When you set it as **Disable**, you have to assign those items manually.
 - **Speed:** When the Auto-Negotiation column is set as **Disable**, users have to set the connection speed to the ports ticked.
 - **Duplex:** When the Auto-Negotiation column is set as **Disable**, users have to set the connection mode in Half/Full to the ports ticked.
 - **Pause:** Flow Control for connection at speed of 10/100Mbps in Full-duplex mode.
 - **Backpressure:** Flow Control for connection at speed of 10/100Mbps in Half-duplex mode.

- **Addr. Learning:** When the Auto-Negotiation column is set as **Disable**, users have to set this column as **Enable** or **Disable**.
- **Select Port No.:** Select the port/ports you want to apply to. You can select one or multiple ports here.

Click **Update** to have the configuration take effect.

Port Mirroring

The Port mirroring is a method for monitoring traffic in switched networks. That Traffic through ports can be monitored by any of the ports means traffic goes in or out monitored (source) ports will be duplicated into mirroring (destination) port.

Port Mirroring													
Dest Port	1	2	3	4	5	6	7	8	9	10	11	12	13
	<input type="checkbox"/>	<input type="checkbox"/>	<input type="checkbox"/>	<input type="checkbox"/>	<input type="checkbox"/>	<input type="checkbox"/>	<input type="checkbox"/>	<input type="checkbox"/>	<input type="checkbox"/>	<input type="checkbox"/>	<input type="checkbox"/>	<input type="checkbox"/>	<input type="checkbox"/>
	14	15	16	17	18	19	20	21	22	23	24	25	26
	<input type="checkbox"/>	<input type="checkbox"/>	<input type="checkbox"/>	<input type="checkbox"/>	<input type="checkbox"/>	<input type="checkbox"/>	<input type="checkbox"/>	<input type="checkbox"/>	<input type="checkbox"/>	<input type="checkbox"/>	<input type="checkbox"/>	<input type="checkbox"/>	<input type="checkbox"/>
Monitored Packets	Disable ▾												
Source Port	1	2	3	4	5	6	7	8	9	10	11	12	13
	<input type="checkbox"/>	<input type="checkbox"/>	<input type="checkbox"/>	<input type="checkbox"/>	<input type="checkbox"/>	<input type="checkbox"/>	<input type="checkbox"/>	<input type="checkbox"/>	<input type="checkbox"/>	<input type="checkbox"/>	<input type="checkbox"/>	<input type="checkbox"/>	<input type="checkbox"/>
	14	15	16	17	18	19	20	21	22	23	24	25	26
	<input type="checkbox"/>	<input type="checkbox"/>	<input type="checkbox"/>	<input type="checkbox"/>	<input type="checkbox"/>	<input type="checkbox"/>	<input type="checkbox"/>	<input type="checkbox"/>	<input type="checkbox"/>	<input type="checkbox"/>	<input type="checkbox"/>	<input type="checkbox"/>	<input type="checkbox"/>
<input type="button" value="Update"/>													
Multi to Multi Sniffer function													

Figure 7-2

- **Destination (mirroring) port** for monitoring RX only, TX only or both RX and TX traffic which come from the source port. Users can connect the mirroring port to LAN analyzer or Netxray.
- **Monitored Packets:** Pull down the selection menu to choose what kind of packet is to be monitored. RX indicates the Received Packets; TX indicates the Transmitted Packets. TX & RX indicates Both Transmitted and Received.
- **Source Port:** The ports that the users want to monitor. All monitored port traffic will be copied to mirroring (destination) port. Users can select multiple source ports by ticking the check boxes beneath the port number label to be monitored.

And then, click **Update** to have the configuration take effect.

Bandwidth Control

This page allows the setting of the bandwidth for each port. The TX rate and RX rate can be filled with the number ranging from 1 to 255. This number should be multiplied by the selected bandwidth resolution to get the actual bandwidth.

Bandwidth Control

Port No	Tx Rate	Rx Rate
01 ▾	(0-255) <input type="text"/> (0:Full Speed)	(0-255) <input type="text"/> (0:Full Speed)
Speed Base	<div style="border: 1px solid black; padding: 2px;"> Low ▾ Low: (1)32Kbps Tx/Rx bandwidth resolution for port 1~ port 26. Actual Tx/Rx bandwidth =Rate value x 32 kbps. The rate value is 1~255. High: (1)256Kbps Tx/Rx bandwidth resolution for port 1~ port 24. Actual Tx/Rx bandwidth=Rate value x 256Kbps. The rate value is 1~255. When link speed is 10MB. The rate value is 1~39. (2)the bandwidth resolution is 2048Kbps for port 25, port 26. Actual Tx/Rx bandwidth=Rate value x 2048Kbps. The rate value is 1~255. When link speed is 10MB. The rate value is 1~4. When link speed is 100MB. The rate value is 1~48. </div>	
<input type="button" value="Update"/> <input type="button" value="LoadDefault"/>		

If the link speed of selected port is lower than the rate that you setting, this system will use the value of link speed as your setting rate.

Figure 7-3

- **Port No.:** Select the port number you want to configure.
- **TX Rate:** Type the TX Rate value. The value is range from 0-255.
- **RX Rate:** Type the RX Rate value. The value is range from 0-255.
- **Speed Base:** Low: step by 32 Kbps. High: step by 256Kbps for Fast Ethernet Ports. 2048 Kbps for Gigabit Ports.

Click **Update** to have the configuration take effect.

Example: Type 5 for both TX and RX Rate and select the High as speed base for port 1 and port 10. The actual rate for port 1 (Fast Ethernet) is "1280", for port 9 (Gigabit Port) is 10240. You could see the table is updated as below.

Port No.	Tx Rate	Rx Rate	Link Speed	Port No.	Tx Rate	Rx Rate	Link Speed
1	Full Speed	Full Speed	---	14	Full Speed	Full Speed	---
2	Full Speed	Full Speed	---	15	Full Speed	Full Speed	---
3	Full Speed	Full Speed	---	16	Full Speed	Full Speed	---
4	Full Speed	Full Speed	---	17	Full Speed	Full Speed	---
5	Full Speed	Full Speed	---	18	Full Speed	Full Speed	---
6	Full Speed	Full Speed	---	19	Full Speed	Full Speed	---
7	Full Speed	Full Speed	---	20	Full Speed	Full Speed	100M
8	Full Speed	Full Speed	---	21	Full Speed	Full Speed	---
9	Full Speed	Full Speed	---	22	Full Speed	Full Speed	---
10	Full Speed	Full Speed	---	23	Full Speed	Full Speed	---
11	Full Speed	Full Speed	---	24	Full Speed	Full Speed	---
12	Full Speed	Full Speed	---	25	Full Speed	Full Speed	---
13	Full Speed	Full Speed	---	26	Full Speed	Full Speed	---

Figure 7-4

Broadcast Storm Control

The switch implements a broadcast storm control mechanism. Tick the check boxes to have them beginning to drop incoming broadcast packets if the received broadcast packet counts reach the threshold defined. Each port's broadcast storm protection function can be enabled individually by ticking the check boxes.

Broadcast Storm Control													
Threshold	<input type="text" value="63"/> 1-63												
Enable Port	<input type="checkbox"/>	<input type="checkbox"/>	<input type="checkbox"/>	<input type="checkbox"/>	<input type="checkbox"/>	<input type="checkbox"/>	<input type="checkbox"/>	<input type="checkbox"/>	<input type="checkbox"/>	<input type="checkbox"/>	<input type="checkbox"/>	<input type="checkbox"/>	<input type="checkbox"/>
	<input type="checkbox"/>	<input type="checkbox"/>	<input type="checkbox"/>	<input type="checkbox"/>	<input type="checkbox"/>	<input type="checkbox"/>	<input type="checkbox"/>	<input type="checkbox"/>	<input type="checkbox"/>	<input type="checkbox"/>	<input type="checkbox"/>	<input type="checkbox"/>	<input type="checkbox"/>
<input type="button" value="Update"/>													
This value indicates the number of broadcast packet which is allowed to enter each port in one time unit. One time unit is 50us for Gigabit speed, 500 us for 100Mbps speed and 5000us for 10Mbps speed													
Note: This effect may be not significant for long broadcast packet, since the broadcast packet count passing through the switch in a time unit is probably less than the specified number.													

Figure 7-5

The broadcast packet is only checked at the selected port and the number of broadcast packets is counted in every time unit. The one time unit indicates the number of broadcast packet which is allowed to enter each port in one time unit. The one time unit is 50us for Gigabit speed, 500 us for 100Mbps speed and 5000us for 10Mbps speed. The excessive broadcast packet will be discarded. For those broadcast packets incoming from the un-selected port, the switch treats it as the normal traffic.

- **Threshold:** Type in the threshold in the range between 1 and 63 to limit the maximum byte counts, which a port can send or receive in a period of time.
- **Enable Port:** Having ticked the boxes, the port will stop transmitting or receiving data when their sending byte counts or receiving byte counts reach the defined threshold.

Example to change one time unit to pps:

The port 1 is 100M port. The one time of it is 500us It indicates there are 2,000 packets can be sent within one second. While type 10 to port 1, that means 10x2000 packets can be sent in one second.

Click **Update** to have the configuration take effect.

PoE

Users could know per PoE port out power status in this page and also enable or disable per port.

POE Configuration								
Port	1	2	3	4	5	6	7	8
Enable	<input checked="" type="checkbox"/>	<input checked="" type="checkbox"/>	<input checked="" type="checkbox"/>	<input checked="" type="checkbox"/>	<input checked="" type="checkbox"/>	<input checked="" type="checkbox"/>	<input checked="" type="checkbox"/>	<input checked="" type="checkbox"/>
Output Power	---	---	---	---	---	---	---	---
POE Class	---	---	---	---	---	---	---	---
Port	09	10	11	12	13	14	15	16
Enable	<input checked="" type="checkbox"/>	<input checked="" type="checkbox"/>	<input checked="" type="checkbox"/>	<input checked="" type="checkbox"/>	<input checked="" type="checkbox"/>	<input checked="" type="checkbox"/>	<input checked="" type="checkbox"/>	<input checked="" type="checkbox"/>
Output Power	---	---	---	---	---	---	---	---
POE Class	---	---	---	---	---	---	---	---
Port	17	18	19	20	21	22	23	24
Enable	<input checked="" type="checkbox"/>	<input checked="" type="checkbox"/>	<input checked="" type="checkbox"/>	<input checked="" type="checkbox"/>	<input checked="" type="checkbox"/>	<input checked="" type="checkbox"/>	<input checked="" type="checkbox"/>	<input checked="" type="checkbox"/>
Output Power	---	---	---	---	---	---	---	---
POE Class	---	---	---	---	---	---	---	---

Figure 7-6

- **Port:** The port number.
- **Enable:** Enable PoE feature of the specific ports.
- **Output Power:** The output power of the port.
- **PoE Class:** The PoE class of the connected port.

8. VLAN Setting

A Virtual LAN (VLAN) is a logical network grouping that limits the broadcast domain, which would allow you to isolate network traffic, so only the members of the same VLAN will receive traffic from the ones of the same VLAN. Basically, creating a VLAN from a switch is logically equivalent of reconnecting a group of network devices to another Layer 2 switch. However, all the network devices are still plugged into the same switch physically.

VLAN Mode

You may select the VLAN Mode of the switch.

Port-based VLAN is for separating traffic only on this single switch. There is no handover of network traffic within VLAN groups to other switches. For the handover to other switches use **Tag Based VLAN**. In VLAN Mode you can switch from Tag to Port Based VLAN. Port Based VLAN is the default mode.

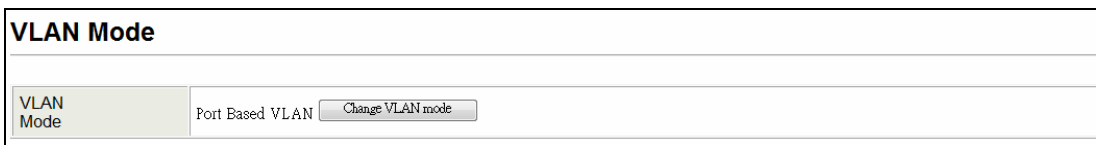


Figure 8-1

After having switched to Tag Based VLAN Mode, the screen changes. On this screen you can now define and configure your Up- and Downlink ports. These are important since here the handover between the switches of your network takes place.

Tag Based VLAN Mode

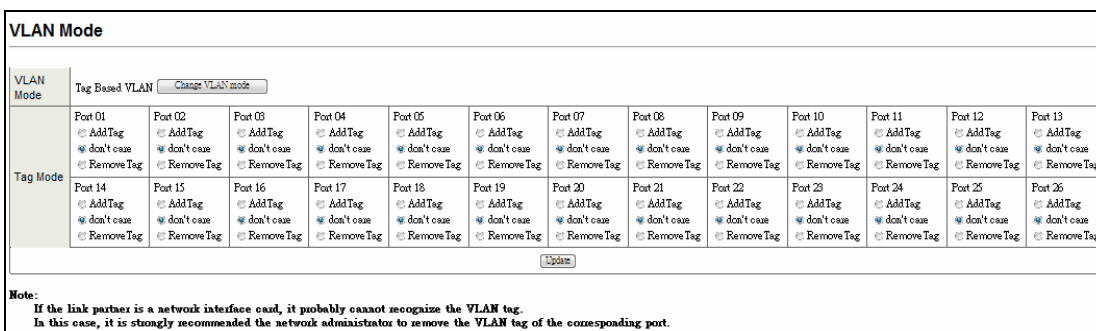


Figure 8-2

- **VLAN Mode:** Displays VLAN mode: port based / Tag based VLAN. Here you can also switch back to Port Based VLAN Mode.
- **Tag Mode:**
 - **Add tag** means the outgoing packet of the selected port will be inserted a 802.1Q tag. Use this setting for your Up- and Downlink Ports in your VLAN Tagged Network.
 - **Don't care** means the outgoing packet of the selected port keep the original packet received at the source port. This is the default setting when starting VLAN configuration. You should change to either Add or Remove Tag.
 - **Remove tag** means the 802.1Q tag of the outgoing packet of the selected port will not be sent. Use this setting for your Network Connections to PCs. Only packets of the VLAN Group the Port is member of will be sent.

VLAN Member

The ports need to be made member of your VLAN groups. This is for Tag Based and Port Based VLAN Mode. The screen here looks different whether you run Tag Based or Port Based Mode.

VLAN Member in Port Based Mode

VLAN Member Setting (Port Based)													
Port	VLAN												
Disp. PORT	01	02	03	04	05	06	07	08	09	10	11	12	13
select	<input type="checkbox"/>	<input type="checkbox"/>	<input type="checkbox"/>	<input type="checkbox"/>	<input type="checkbox"/>	<input type="checkbox"/>	<input type="checkbox"/>	<input type="checkbox"/>	<input type="checkbox"/>	<input type="checkbox"/>	<input type="checkbox"/>	<input type="checkbox"/>	<input type="checkbox"/>
Disp. PORT	14	15	16	17	18	19	20	21	22	23	24	25	26
select	<input type="checkbox"/>	<input type="checkbox"/>	<input type="checkbox"/>	<input type="checkbox"/>	<input type="checkbox"/>	<input type="checkbox"/>	<input type="checkbox"/>	<input type="checkbox"/>	<input type="checkbox"/>	<input type="checkbox"/>	<input type="checkbox"/>	<input type="checkbox"/>	<input type="checkbox"/>

VLAN MEMBER																										
Port	1	2	3	4	5	6	7	8	9	10	11	12	13	14	15	16	17	18	19	20	21	22	23	24	25	26
1	<input type="checkbox"/>	<input type="checkbox"/>	<input type="checkbox"/>	<input type="checkbox"/>	<input type="checkbox"/>	<input type="checkbox"/>	<input type="checkbox"/>	<input type="checkbox"/>	<input type="checkbox"/>	<input type="checkbox"/>	<input type="checkbox"/>	<input type="checkbox"/>	<input type="checkbox"/>	<input type="checkbox"/>	<input type="checkbox"/>	<input type="checkbox"/>	<input type="checkbox"/>	<input type="checkbox"/>	<input type="checkbox"/>	<input type="checkbox"/>	<input type="checkbox"/>	<input type="checkbox"/>	<input type="checkbox"/>	<input type="checkbox"/>	<input type="checkbox"/>	<input type="checkbox"/>
2	<input type="checkbox"/>	<input type="checkbox"/>	<input type="checkbox"/>	<input type="checkbox"/>	<input type="checkbox"/>	<input type="checkbox"/>	<input type="checkbox"/>	<input type="checkbox"/>	<input type="checkbox"/>	<input type="checkbox"/>	<input type="checkbox"/>	<input type="checkbox"/>	<input type="checkbox"/>	<input type="checkbox"/>	<input type="checkbox"/>	<input type="checkbox"/>	<input type="checkbox"/>	<input type="checkbox"/>	<input type="checkbox"/>	<input type="checkbox"/>	<input type="checkbox"/>	<input type="checkbox"/>	<input type="checkbox"/>	<input type="checkbox"/>	<input type="checkbox"/>	<input type="checkbox"/>
3	<input type="checkbox"/>	<input type="checkbox"/>	<input type="checkbox"/>	<input type="checkbox"/>	<input type="checkbox"/>	<input type="checkbox"/>	<input type="checkbox"/>	<input type="checkbox"/>	<input type="checkbox"/>	<input type="checkbox"/>	<input type="checkbox"/>	<input type="checkbox"/>	<input type="checkbox"/>	<input type="checkbox"/>	<input type="checkbox"/>	<input type="checkbox"/>	<input type="checkbox"/>	<input type="checkbox"/>	<input type="checkbox"/>	<input type="checkbox"/>	<input type="checkbox"/>	<input type="checkbox"/>	<input type="checkbox"/>	<input type="checkbox"/>	<input type="checkbox"/>	<input type="checkbox"/>
4	<input type="checkbox"/>	<input type="checkbox"/>	<input type="checkbox"/>	<input type="checkbox"/>	<input type="checkbox"/>	<input type="checkbox"/>	<input type="checkbox"/>	<input type="checkbox"/>	<input type="checkbox"/>	<input type="checkbox"/>	<input type="checkbox"/>	<input type="checkbox"/>	<input type="checkbox"/>	<input type="checkbox"/>	<input type="checkbox"/>	<input type="checkbox"/>	<input type="checkbox"/>	<input type="checkbox"/>	<input type="checkbox"/>	<input type="checkbox"/>	<input type="checkbox"/>	<input type="checkbox"/>	<input type="checkbox"/>	<input type="checkbox"/>	<input type="checkbox"/>	<input type="checkbox"/>
5	<input type="checkbox"/>	<input type="checkbox"/>	<input type="checkbox"/>	<input type="checkbox"/>	<input type="checkbox"/>	<input type="checkbox"/>	<input type="checkbox"/>	<input type="checkbox"/>	<input type="checkbox"/>	<input type="checkbox"/>	<input type="checkbox"/>	<input type="checkbox"/>	<input type="checkbox"/>	<input type="checkbox"/>	<input type="checkbox"/>	<input type="checkbox"/>	<input type="checkbox"/>	<input type="checkbox"/>	<input type="checkbox"/>	<input type="checkbox"/>	<input type="checkbox"/>	<input type="checkbox"/>	<input type="checkbox"/>	<input type="checkbox"/>	<input type="checkbox"/>	<input type="checkbox"/>
6	<input type="checkbox"/>	<input type="checkbox"/>	<input type="checkbox"/>	<input type="checkbox"/>	<input type="checkbox"/>	<input type="checkbox"/>	<input type="checkbox"/>	<input type="checkbox"/>	<input type="checkbox"/>	<input type="checkbox"/>	<input type="checkbox"/>	<input type="checkbox"/>	<input type="checkbox"/>	<input type="checkbox"/>	<input type="checkbox"/>	<input type="checkbox"/>	<input type="checkbox"/>	<input type="checkbox"/>	<input type="checkbox"/>	<input type="checkbox"/>	<input type="checkbox"/>	<input type="checkbox"/>	<input type="checkbox"/>	<input type="checkbox"/>	<input type="checkbox"/>	<input type="checkbox"/>
7	<input type="checkbox"/>	<input type="checkbox"/>	<input type="checkbox"/>	<input type="checkbox"/>	<input type="checkbox"/>	<input type="checkbox"/>	<input type="checkbox"/>	<input type="checkbox"/>	<input type="checkbox"/>	<input type="checkbox"/>	<input type="checkbox"/>	<input type="checkbox"/>	<input type="checkbox"/>	<input type="checkbox"/>	<input type="checkbox"/>	<input type="checkbox"/>	<input type="checkbox"/>	<input type="checkbox"/>	<input type="checkbox"/>	<input type="checkbox"/>	<input type="checkbox"/>	<input type="checkbox"/>	<input type="checkbox"/>	<input type="checkbox"/>	<input type="checkbox"/>	<input type="checkbox"/>
8	<input type="checkbox"/>	<input type="checkbox"/>	<input type="checkbox"/>	<input type="checkbox"/>	<input type="checkbox"/>	<input type="checkbox"/>	<input type="checkbox"/>	<input type="checkbox"/>	<input type="checkbox"/>	<input type="checkbox"/>	<input type="checkbox"/>	<input type="checkbox"/>	<input type="checkbox"/>	<input type="checkbox"/>	<input type="checkbox"/>	<input type="checkbox"/>	<input type="checkbox"/>	<input type="checkbox"/>	<input type="checkbox"/>	<input type="checkbox"/>	<input type="checkbox"/>	<input type="checkbox"/>	<input type="checkbox"/>	<input type="checkbox"/>	<input type="checkbox"/>	<input type="checkbox"/>
9	<input type="checkbox"/>	<input type="checkbox"/>	<input type="checkbox"/>	<input type="checkbox"/>	<input type="checkbox"/>	<input type="checkbox"/>	<input type="checkbox"/>	<input type="checkbox"/>	<input type="checkbox"/>	<input type="checkbox"/>	<input type="checkbox"/>	<input type="checkbox"/>	<input type="checkbox"/>	<input type="checkbox"/>	<input type="checkbox"/>	<input type="checkbox"/>	<input type="checkbox"/>	<input type="checkbox"/>	<input type="checkbox"/>	<input type="checkbox"/>	<input type="checkbox"/>	<input type="checkbox"/>	<input type="checkbox"/>	<input type="checkbox"/>	<input type="checkbox"/>	<input type="checkbox"/>
10	<input type="checkbox"/>	<input type="checkbox"/>	<input type="checkbox"/>	<input type="checkbox"/>	<input type="checkbox"/>	<input type="checkbox"/>	<input type="checkbox"/>	<input type="checkbox"/>	<input type="checkbox"/>	<input type="checkbox"/>	<input type="checkbox"/>	<input type="checkbox"/>	<input type="checkbox"/>	<input type="checkbox"/>	<input type="checkbox"/>	<input type="checkbox"/>	<input type="checkbox"/>	<input type="checkbox"/>	<input type="checkbox"/>	<input type="checkbox"/>	<input type="checkbox"/>	<input type="checkbox"/>	<input type="checkbox"/>	<input type="checkbox"/>	<input type="checkbox"/>	<input type="checkbox"/>
11	<input type="checkbox"/>	<input type="checkbox"/>	<input type="checkbox"/>	<input type="checkbox"/>	<input type="checkbox"/>	<input type="checkbox"/>	<input type="checkbox"/>	<input type="checkbox"/>	<input type="checkbox"/>	<input type="checkbox"/>	<input type="checkbox"/>	<input type="checkbox"/>	<input type="checkbox"/>	<input type="checkbox"/>	<input type="checkbox"/>	<input type="checkbox"/>	<input type="checkbox"/>	<input type="checkbox"/>	<input type="checkbox"/>	<input type="checkbox"/>	<input type="checkbox"/>	<input type="checkbox"/>	<input type="checkbox"/>	<input type="checkbox"/>	<input type="checkbox"/>	<input type="checkbox"/>
12	<input type="checkbox"/>	<input type="checkbox"/>	<input type="checkbox"/>	<input type="checkbox"/>	<input type="checkbox"/>	<input type="checkbox"/>	<input type="checkbox"/>	<input type="checkbox"/>	<input type="checkbox"/>	<input type="checkbox"/>	<input type="checkbox"/>	<input type="checkbox"/>	<input type="checkbox"/>	<input type="checkbox"/>	<input type="checkbox"/>	<input type="checkbox"/>	<input type="checkbox"/>	<input type="checkbox"/>	<input type="checkbox"/>	<input type="checkbox"/>	<input type="checkbox"/>	<input type="checkbox"/>	<input type="checkbox"/>	<input type="checkbox"/>	<input type="checkbox"/>	<input type="checkbox"/>
13	<input type="checkbox"/>	<input type="checkbox"/>	<input type="checkbox"/>	<input type="checkbox"/>	<input type="checkbox"/>	<input type="checkbox"/>	<input type="checkbox"/>	<input type="checkbox"/>	<input type="checkbox"/>	<input type="checkbox"/>	<input type="checkbox"/>	<input type="checkbox"/>	<input type="checkbox"/>	<input type="checkbox"/>	<input type="checkbox"/>	<input type="checkbox"/>	<input type="checkbox"/>	<input type="checkbox"/>	<input type="checkbox"/>	<input type="checkbox"/>	<input type="checkbox"/>	<input type="checkbox"/>	<input type="checkbox"/>	<input type="checkbox"/>	<input type="checkbox"/>	<input type="checkbox"/>
14	<input type="checkbox"/>	<input type="checkbox"/>	<input type="checkbox"/>	<input type="checkbox"/>	<input type="checkbox"/>	<input type="checkbox"/>	<input type="checkbox"/>	<input type="checkbox"/>	<input type="checkbox"/>	<input type="checkbox"/>	<input type="checkbox"/>	<input type="checkbox"/>	<input type="checkbox"/>	<input type="checkbox"/>	<input type="checkbox"/>	<input type="checkbox"/>	<input type="checkbox"/>	<input type="checkbox"/>	<input type="checkbox"/>	<input type="checkbox"/>	<input type="checkbox"/>	<input type="checkbox"/>	<input type="checkbox"/>	<input type="checkbox"/>	<input type="checkbox"/>	<input type="checkbox"/>
15	<input type="checkbox"/>	<input type="checkbox"/>	<input type="checkbox"/>	<input type="checkbox"/>	<input type="checkbox"/>	<input type="checkbox"/>	<input type="checkbox"/>	<input type="checkbox"/>	<input type="checkbox"/>	<input type="checkbox"/>	<input type="checkbox"/>	<input type="checkbox"/>	<input type="checkbox"/>	<input type="checkbox"/>	<input type="checkbox"/>	<input type="checkbox"/>	<input type="checkbox"/>	<input type="checkbox"/>	<input type="checkbox"/>	<input type="checkbox"/>	<input type="checkbox"/>	<input type="checkbox"/>	<input type="checkbox"/>	<input type="checkbox"/>	<input type="checkbox"/>	<input type="checkbox"/>
16	<input type="checkbox"/>	<input type="checkbox"/>	<input type="checkbox"/>	<input type="checkbox"/>	<input type="checkbox"/>	<input type="checkbox"/>	<input type="checkbox"/>	<input type="checkbox"/>	<input type="checkbox"/>	<input type="checkbox"/>	<input type="checkbox"/>	<input type="checkbox"/>	<input type="checkbox"/>	<input type="checkbox"/>	<input type="checkbox"/>	<input type="checkbox"/>	<input type="checkbox"/>	<input type="checkbox"/>	<input type="checkbox"/>	<input type="checkbox"/>	<input type="checkbox"/>	<input type="checkbox"/>	<input type="checkbox"/>	<input type="checkbox"/>	<input type="checkbox"/>	<input type="checkbox"/>
17	<input type="checkbox"/>	<input type="checkbox"/>	<input type="checkbox"/>	<input type="checkbox"/>	<input type="checkbox"/>	<input type="checkbox"/>	<input type="checkbox"/>	<input type="checkbox"/>	<input type="checkbox"/>	<input type="checkbox"/>	<input type="checkbox"/>	<input type="checkbox"/>	<input type="checkbox"/>	<input type="checkbox"/>	<input type="checkbox"/>	<input type="checkbox"/>	<input type="checkbox"/>	<input type="checkbox"/>	<input type="checkbox"/>	<input type="checkbox"/>	<input type="checkbox"/>	<input type="checkbox"/>	<input type="checkbox"/>	<input type="checkbox"/>	<input type="checkbox"/>	<input type="checkbox"/>
18	<input type="checkbox"/>	<input type="checkbox"/>	<input type="checkbox"/>	<input type="checkbox"/>	<input type="checkbox"/>	<input type="checkbox"/>	<input type="checkbox"/>	<input type="checkbox"/>	<input type="checkbox"/>	<input type="checkbox"/>	<input type="checkbox"/>	<input type="checkbox"/>	<input type="checkbox"/>	<input type="checkbox"/>	<input type="checkbox"/>	<input type="checkbox"/>	<input type="checkbox"/>	<input type="checkbox"/>	<input type="checkbox"/>	<input type="checkbox"/>	<input type="checkbox"/>	<input type="checkbox"/>	<input type="checkbox"/>	<input type="checkbox"/>	<input type="checkbox"/>	<input type="checkbox"/>
19	<input type="checkbox"/>	<input type="checkbox"/>	<input type="checkbox"/>	<input type="checkbox"/>	<input type="checkbox"/>	<input type="checkbox"/>	<input type="checkbox"/>	<input type="checkbox"/>	<input type="checkbox"/>	<input type="checkbox"/>	<input type="checkbox"/>	<input type="checkbox"/>	<input type="checkbox"/>	<input type="checkbox"/>	<input type="checkbox"/>	<input type="checkbox"/>	<input type="checkbox"/>	<input type="checkbox"/>	<input type="checkbox"/>	<input type="checkbox"/>	<input type="checkbox"/>	<input type="checkbox"/>	<input type="checkbox"/>	<input type="checkbox"/>	<input type="checkbox"/>	<input type="checkbox"/>
20	<input type="checkbox"/>	<input type="checkbox"/>	<input type="checkbox"/>	<input type="checkbox"/>	<input type="checkbox"/>	<input type="checkbox"/>	<input type="checkbox"/>	<input type="checkbox"/>	<input type="checkbox"/>	<input type="checkbox"/>	<input type="checkbox"/>	<input type="checkbox"/>	<input type="checkbox"/>	<input type="checkbox"/>	<input type="checkbox"/>	<input type="checkbox"/>	<input type="checkbox"/>	<input type="checkbox"/>	<input type="checkbox"/>	<input type="checkbox"/>	<input type="checkbox"/>	<input type="checkbox"/>	<input type="checkbox"/>	<input type="checkbox"/>	<input type="checkbox"/>	<input type="checkbox"/>
21	<input type="checkbox"/>	<input type="checkbox"/>	<input type="checkbox"/>	<input type="checkbox"/>	<input type="checkbox"/>	<input type="checkbox"/>	<input type="checkbox"/>	<input type="checkbox"/>	<input type="checkbox"/>	<input type="checkbox"/>	<input type="checkbox"/>	<input type="checkbox"/>	<input type="checkbox"/>	<input type="checkbox"/>	<input type="checkbox"/>	<input type="checkbox"/>	<input type="checkbox"/>	<input type="checkbox"/>	<input type="checkbox"/>	<input type="checkbox"/>	<input type="checkbox"/>	<input type="checkbox"/>	<input type="checkbox"/>	<input type="checkbox"/>	<input type="checkbox"/>	<input type="checkbox"/>
22	<input type="checkbox"/>	<input type="checkbox"/>	<input type="checkbox"/>	<input type="checkbox"/>	<input type="checkbox"/>	<input type="checkbox"/>	<input type="checkbox"/>	<input type="checkbox"/>	<input type="checkbox"/>	<input type="checkbox"/>	<input type="checkbox"/>	<input type="checkbox"/>	<input type="checkbox"/>	<input type="checkbox"/>	<input type="checkbox"/>	<input type="checkbox"/>	<input type="checkbox"/>	<input type="checkbox"/>	<input type="checkbox"/>	<input type="checkbox"/>	<input type="checkbox"/>	<input type="checkbox"/>	<input type="checkbox"/>	<input type="checkbox"/>	<input type="checkbox"/>	<input type="checkbox"/>
23	<input type="checkbox"/>	<input type="checkbox"/>	<input type="checkbox"/>	<input type="checkbox"/>	<input type="checkbox"/>	<input type="checkbox"/>	<input type="checkbox"/>	<input type="checkbox"/>	<input type="checkbox"/>	<input type="checkbox"/>	<input type="checkbox"/>	<input type="checkbox"/>	<input type="checkbox"/>	<input type="checkbox"/>	<input type="checkbox"/>	<input type="checkbox"/>	<input type="checkbox"/>	<input type="checkbox"/>	<input type="checkbox"/>	<input type="checkbox"/>	<input type="checkbox"/>	<input type="checkbox"/>	<input type="checkbox"/>	<input type="checkbox"/>	<input type="checkbox"/>	<input type="checkbox"/>
24	<input type="checkbox"/>	<input type="checkbox"/>	<input type="checkbox"/>	<input type="checkbox"/>	<input type="checkbox"/>	<input type="checkbox"/>	<input type="checkbox"/>	<input type="checkbox"/>	<input type="checkbox"/>	<input type="checkbox"/>	<input type="checkbox"/>	<input type="checkbox"/>	<input type="checkbox"/>	<input type="checkbox"/>	<input type="checkbox"/>	<input type="checkbox"/>	<input type="checkbox"/>	<input type="checkbox"/>	<input type="checkbox"/>	<input type="checkbox"/>	<input type="checkbox"/>	<input type="checkbox"/>	<input type="checkbox"/>	<input type="checkbox"/>	<input type="checkbox"/>	<input type="checkbox"/>
25	<input type="checkbox"/>	<input type="checkbox"/>	<input type="checkbox"/>	<input type="checkbox"/>	<input type="checkbox"/>	<input type="checkbox"/>	<input type="checkbox"/>	<input type="checkbox"/>	<input type="checkbox"/>	<input type="checkbox"/>	<input type="checkbox"/>	<input type="checkbox"/>	<input type="checkbox"/>	<input type="checkbox"/>	<input type="checkbox"/>	<input type="checkbox"/>	<input type="checkbox"/>	<input type="checkbox"/>	<input type="checkbox"/>	<input type="checkbox"/>	<input type="checkbox"/>	<input type="checkbox"/>	<input type="checkbox"/>	<input type="checkbox"/>	<input type="checkbox"/>	<input type="checkbox"/>
26	<input type="checkbox"/>	<input type="checkbox"/>	<input type="checkbox"/>	<input type="checkbox"/>	<input type="checkbox"/>	<input type="checkbox"/>	<input type="checkbox"/>	<input type="checkbox"/>	<input type="checkbox"/>	<input type="checkbox"/>	<input type="checkbox"/>	<input type="checkbox"/>	<input type="checkbox"/>	<input type="checkbox"/>	<input type="checkbox"/>	<input type="checkbox"/>	<input type="checkbox"/>	<input type="checkbox"/>	<input type="checkbox"/>	<input type="checkbox"/>	<input type="checkbox"/>	<input type="checkbox"/>	<input type="checkbox"/>	<input type="checkbox"/>	<input type="checkbox"/>	<input type="checkbox"/>

Figure 8-3

In Port Based Mode you see a matrix of your 8 Ports. Simply select the port on top screen you want to configure, click on **Read**, and then select or deselect the ports that are on the same VLAN group. In this configuration mode you do not need to worry about defining VLAN groups and VLAN IDs.

● **VLAN Member Port Select:**

Select the VLAN Member here.

VLAN Member Port	01	02	03	04	05	06	07	08
select	<input type="checkbox"/>	<input type="checkbox"/>	<input type="checkbox"/>	<input type="checkbox"/>	<input type="checkbox"/>	<input type="checkbox"/>	<input type="checkbox"/>	<input type="checkbox"/>
VLAN Member Port	09	10	11	12	13	14	15	16
select	<input type="checkbox"/>	<input type="checkbox"/>	<input type="checkbox"/>	<input type="checkbox"/>	<input type="checkbox"/>	<input type="checkbox"/>	<input type="checkbox"/>	<input type="checkbox"/>
VLAN Member Port	17	18	19	20	21	22	23	24
select	<input checked="" type="checkbox"/>	<input checked="" type="checkbox"/>	<input checked="" type="checkbox"/>	<input checked="" type="checkbox"/>	<input checked="" type="checkbox"/>	<input checked="" type="checkbox"/>	<input checked="" type="checkbox"/>	<input checked="" type="checkbox"/>
VLAN Member Port	25	26	--	--	--	--	--	--
select	<input checked="" type="checkbox"/>	<input checked="" type="checkbox"/>	<input type="checkbox"/>	<input type="checkbox"/>	<input type="checkbox"/>	<input type="checkbox"/>	<input type="checkbox"/>	<input type="checkbox"/>

Figure 8-6

● **VID Source Port:**

This table allows you to configure PVID of the port. Select the port number while you add VLAN and select VLAN member ports, the selected ports' PVID will be the VID you typed.

Note: One port only can have one PVID. While one port joins multiple VLAN groups, the PVID is important to identify where the incoming traffic will be forwarded to.

For example: Port 3 is the member of VLAN 100 and 200, PVID of it is 100. The traffic received from the connected PC is usually untagged, the incoming packets will then be tagged with PVID within the switch and then follow the VID table to forward traffic.

VID Source port	01	02	03	04	05	06	07	08
select	<input type="checkbox"/>	<input type="checkbox"/>	<input type="checkbox"/>	<input type="checkbox"/>	<input type="checkbox"/>	<input type="checkbox"/>	<input type="checkbox"/>	<input type="checkbox"/>
VID Source port	09	10	11	12	13	14	15	16
select	<input type="checkbox"/>	<input type="checkbox"/>	<input type="checkbox"/>	<input type="checkbox"/>	<input type="checkbox"/>	<input type="checkbox"/>	<input type="checkbox"/>	<input type="checkbox"/>
VID Source port	17	18	19	20	21	22	23	24
select	<input type="checkbox"/>	<input type="checkbox"/>	<input type="checkbox"/>	<input type="checkbox"/>	<input type="checkbox"/>	<input type="checkbox"/>	<input type="checkbox"/>	<input type="checkbox"/>
VID Source port	25	26	--	--	--	--	--	--
select	<input type="checkbox"/>	<input type="checkbox"/>	<input type="checkbox"/>	<input type="checkbox"/>	<input type="checkbox"/>	<input type="checkbox"/>	<input type="checkbox"/>	<input type="checkbox"/>

Figure 8-7

● **Port VID Map:**

This table shows the PVID of the ports.

		Port VID Map							
Port		01	02	03	04	05	06	07	08
VID		--	--	--	--	--	--	--	--
Port		09	10	11	12	13	14	15	16
VID		--	--	--	--	--	--	--	--
Port		17	18	19	20	21	22	23	24
VID		--	--	--	--	--	--	--	--
Port		25	26	--	--	--	--	--	--
VID		--	--	--	--	--	--	--	--

Figure 8-8

● **VLAN Member Table:**

This table shows the VID and its member ports.

		VLAN MEMBER																										
VID \ Port		1	2	3	4	5	6	7	8	9	0	1	1	1	1	1	1	1	1	1	1	2	2	2	2	2	2	2
		1	2	3	4	5	6	7	8	9	0	1	1	1	1	1	1	1	1	1	1	2	2	2	2	2	2	2

Figure 8-9

Configuration Steps:

First, add your VLAN Groups (identified throughout your network by unique and constant numbers). Start with IDs from 100 and up is often. Starting with 100 gives you enough free room and less compatibility issues.

Second, enter “100” in the field right of VID Setting, and select or deselect which ports are member of that group. Your up- and downlink ports need to be the member of every existing group. If the port joins different VLAN groups, the VID Source Port allows you to define the PVID.

After configured and selected, clicking on **Add** to create the table and related port mapping. The new group with its setting will be displayed at the bottom of the screen.

Multi to 1 Setting

Multi to 1 VLAN is used in CPE side of Ethernet-to-the-Home and is exclusive to VLAN setting on **VLAN Member Setting**. When VLAN Member Setting is updated, multi to 1 setting will be void and vice versa. The disable port means the port which will be excluded in this setting. All ports excluded in this setting are treated as the same VLAN group. In a normal Tag Based VLAN network you will not need this configuration option.

Multi to 1 Setting

Destination PortNo.	01													
Current Setting	Port-													
Disable Port	01	02	03	04	05	06	07	08	09	10	11	12	13	
	<input type="checkbox"/>	<input type="checkbox"/>	<input type="checkbox"/>	<input type="checkbox"/>	<input type="checkbox"/>	<input type="checkbox"/>	<input type="checkbox"/>	<input type="checkbox"/>	<input type="checkbox"/>	<input type="checkbox"/>	<input type="checkbox"/>	<input type="checkbox"/>	<input type="checkbox"/>	<input type="checkbox"/>
	14	15	16	17	18	19	20	21	22	23	24	25	26	
	<input type="checkbox"/>	<input type="checkbox"/>	<input type="checkbox"/>	<input type="checkbox"/>	<input type="checkbox"/>	<input type="checkbox"/>	<input type="checkbox"/>	<input type="checkbox"/>	<input type="checkbox"/>	<input type="checkbox"/>	<input type="checkbox"/>	<input type="checkbox"/>	<input type="checkbox"/>	<input type="checkbox"/>

Note: "Disabled port" defines the switch physical port which is disabled. [Update](#)

1. A example for Multi-to-1 structure

**Destination Port/
Current Setting**

22

Ports

01
02
⋮
24

VLAN Groups

1
2
⋮
24

2.The original setting of the VLAN Group will be cleared and replaced by this special structure if you enable this function.
 On the other hand, if you set the VLAN Group again, this special structure will be cleared and replaced by your newest setting.
 3.This configuration is port base VLAN only.

Figure 8-10

9. Per Port Counter

Port Counter

This page provides port counter of each port. There are 4 categories: Receive Packet & Transmit Packet / Transmit & Collision / Receive Packet & Drop / Receive & CRC error. Once you change the counter category, the counter will be cleared automatically.

Counter Category			
Counter Mode Selection: Transmit Packet & Receive Packet <input type="button" value="Update"/>			
Port	Transmit Packet Receive Packet		
01	0		0
02	0		0
03	0		0
04	0		0
05	0		0
06	0		0
07	0		0
08	0		0
09	0		0
10	0		0
11	0		0
12	0		0
13	0		0
14	0		0
15	0		0
16	0		0
17	0		0
18	0		0
19	0		0
20	915		1117
21	0		0
22	0		0
23	0		0
24	0		0
25	0		0
26	0		0

Figure 9-1

- **Transmit packet & Receive packet:** This category shows both the received packet count (excluding the incorrect packet) and the transmitted packet count.
- **Collision Count & Transmit packet:** This category shows the packets outgoing from the switch and the count of collision.
- **Drop packet & Receive packet:** This category shows the number of received valid packet and the number of dropped packet.
- **CRC packet & Receive packet:** This category shows the received correct packet and received CRC error. Once you see CRC error increasing here, notice that there may be hardware issues. The possible reasons could be port failure, cable lose/broken, cable/fiber connector failure, etc.
- **Clear:** Press **clear** will clear all counters.
- **Refresh:** Press **Refresh** button will aggregate the number of the counter for all ports.

10. QoS Setting

Here you can configure QoS policy priority mode and CoS (Class of Service) configuration. QoS (Quality of Service) refers to mechanisms in the network software that make the actual determination of which packets have priority. CoS refers to feature sets, or groups of services, that are assigned to users based on company policy. If a feature set includes priority transmission, and then CoS winds up being implemented in QoS functions within the routers and switches in the network. In an enterprise network, class of service (CoS) differentiates high-priority traffic from lower-priority traffic. Tags may be added to the packets to identify such classes, but they do not guarantee delivery as do quality of service (QoS) functions, which are implemented in the network devices.

Priority Mode

There are three priority modes available to specify the priority of packets being serviced. Those include First-In-First-Out, All-High-Before-Low, and Weight-Round-Robin.

Priority Mode	
Priority Mode	
Mode	<input checked="" type="radio"/> First-In-First-Out <input type="radio"/> All-High-before-Low <input type="radio"/> Weight-Round-Robin.
	Low weight: <input type="text" value="0"/> High weight: <input type="text" value="0"/>
<input type="button" value="Update"/>	
<small>Note: When the queue weight is set to "0", it will be treated as "8". The "low weight" and "high weight" means the ratio of the packet in the transmit queue. For example, if "low weight" and "high weight" are set to "3" and "5", the ratio of the transmit packet for the low priority to high priority is 3/5.</small>	

Figure 10-1

- **First-In-First-Out:** Packets are placed into the queue and serviced in the order they were received.
- **All-high-before-low (Strict priority) :** All packets will be assigned to either high priority queue (Queue 2) or low priority queue (Queue 1). The packet on the low priority queue will not be forwarded until the high priority queue is empty.
- **WRR mode:** There are 4 priority queues for Weighted-and-round-robin (WRR) mode. When this mode is selected, the traffic will be forwarded according to the number set in each queue.

Port, 802.1p, IP / DS based

The page allows you to enable Port Based, VLAN Tag or IP/DS mode of COS.

Class of Service Configuration							
☑ Enable High Priority							
Port No./Mode	Port Base	VLAN Tag	IP / DS	Port No./Mode	Port Base	VLAN Tag	IP / DS
1	<input type="checkbox"/>	<input type="checkbox"/>	<input type="checkbox"/>	14	<input type="checkbox"/>	<input type="checkbox"/>	<input type="checkbox"/>
2	<input type="checkbox"/>	<input type="checkbox"/>	<input type="checkbox"/>	15	<input type="checkbox"/>	<input type="checkbox"/>	<input type="checkbox"/>
3	<input type="checkbox"/>	<input type="checkbox"/>	<input type="checkbox"/>	16	<input type="checkbox"/>	<input type="checkbox"/>	<input type="checkbox"/>
4	<input type="checkbox"/>	<input type="checkbox"/>	<input type="checkbox"/>	17	<input type="checkbox"/>	<input type="checkbox"/>	<input type="checkbox"/>
5	<input type="checkbox"/>	<input type="checkbox"/>	<input type="checkbox"/>	18	<input type="checkbox"/>	<input type="checkbox"/>	<input type="checkbox"/>
6	<input type="checkbox"/>	<input type="checkbox"/>	<input type="checkbox"/>	19	<input type="checkbox"/>	<input type="checkbox"/>	<input type="checkbox"/>
7	<input type="checkbox"/>	<input type="checkbox"/>	<input type="checkbox"/>	20	<input type="checkbox"/>	<input type="checkbox"/>	<input type="checkbox"/>
8	<input type="checkbox"/>	<input type="checkbox"/>	<input type="checkbox"/>	21	<input type="checkbox"/>	<input type="checkbox"/>	<input type="checkbox"/>
9	<input type="checkbox"/>	<input type="checkbox"/>	<input type="checkbox"/>	22	<input type="checkbox"/>	<input type="checkbox"/>	<input type="checkbox"/>
10	<input type="checkbox"/>	<input type="checkbox"/>	<input type="checkbox"/>	23	<input type="checkbox"/>	<input type="checkbox"/>	<input type="checkbox"/>
11	<input type="checkbox"/>	<input type="checkbox"/>	<input type="checkbox"/>	24	<input type="checkbox"/>	<input type="checkbox"/>	<input type="checkbox"/>
12	<input type="checkbox"/>	<input type="checkbox"/>	<input type="checkbox"/>	25	<input type="checkbox"/>	<input type="checkbox"/>	<input type="checkbox"/>
13	<input type="checkbox"/>	<input type="checkbox"/>	<input type="checkbox"/>	26	<input type="checkbox"/>	<input type="checkbox"/>	<input type="checkbox"/>

As long as any of three COS schemes(802.1p,IP TOS/DS or Port Base) is mapped to "high", the data packet will be treated as the high priority.

Figure 10-2

● Class of Service Configuration

- **Enable High Priority:** After Enabled High Priority, the following enabled Port Based parameter will become High Priority.
- **Port Base:** The selected port equipped with High Priority. The non-selected port is Low priority. A packet received by a high priority port is handled as a high priority packet.
- **VLAN Tag:** The switch follows the VLAN tag of the incoming packets to forward traffic. VLAN Tag priority: high priority -> 4~7 ; low priority -> 0~3
- **IP/DS:** The switch follows the IP TOS / Diff Serve of the incoming packets to forward traffic. IPv4 DS and IPv6 TC: high priority -> 10,18,26,34,46,48,56 ; low priority -> others

TCP / UDP Port Based

This page allows users to define the Option type of the pre-defined protocols or user-defined protocols. Select the Option of the Protocol as below figure shown.

Class of Service Configuration				
Protocol	Option			
FTP(20,21)	F-I-F-O			
SSH(22)	F-I-F-O			
TELNET(23)	F-I-F-O			
SMTP(25)	F-I-F-O			
DNS(53)	F-I-F-O			
TFTP(69)	F-I-F-O			
HTTP(80,8080)	F-I-F-O			
POP3(110)	F-I-F-O			
NEWS(119)	F-I-F-O			
SNTP(123)	F-I-F-O			
NetBIOS(137-139)	F-I-F-O			
IMAP(143,220)	F-I-F-O			
SNMP(161,162)	F-I-F-O			
HTTPS(443)	F-I-F-O			
MSN(1863)	F-I-F-O			
XRD_RDP(3389)	F-I-F-O			
QQ(4000,8000)	F-I-F-O			
ICQ(5190)	F-I-F-O			
Yahoo(5050)	F-I-F-O			
BOOTP_DHCP(67,68)	Low			
User_Define_a	F-I-F-O			
User_Define_b	F-I-F-O			
User_Define_c	F-I-F-O			
User_Define_d	F-I-F-O			
User_Define Port number (1-65535) Mask(0-255)	User_Define_a Port: Mask:0	User_Define_b Port: Mask:0	User_Define_c Port: Mask:0	User_Define_d Port: Mask:0
<p>Note:The mask defines which bit is ignored within the IP address bit 0 ~ bit 7. For example, UDP/TCP port = 65535 and mask = 5, this means 65530, 65531, 65534 and 65535 are all taken into account. UDP/TCP port =65535 and mask=0, this means only 65535 is taken into account.</p> <p>TCP/UDP port QoS function <input type="button" value="Not Override"/></p> <p>Note:When the "override" item is selected, the Port_based, Tag_based, IP TOS_based, CoS listed above will be ignored.</p> <p style="text-align: center;"><input type="button" value="Update"/></p> <p>The Class of Service for TCP/UDP port number allows the network administrator to assign the specific application to a priority queue. F-I-F-O: The incoming packet will be forwarded in first-in-first-out scheme. Discard: The incoming packet will be discarded at the source port. High: The incoming packet will be forwarded with the high priority. Low: The incoming packet will be forwarded with the Low priority.</p>				

Figure 10-3

The Class of Service for TCP/UDP port number allows the network administrator to assign the specific application to a priority queue.

- **F-I-F-O:** The incoming packet will be forwarded in first-in-first-out scheme.
- **Discard:** The incoming packet will be discarded at the source port.
- **High:** The incoming packet will be forwarded with the high priority.
- **Low:** The incoming packet will be forwarded with the Low priority.

11. Security

The Security feature allows you to enable Port Security (MAC Address Binding) and TCP_UDP Filter feature.

MAC Address Binding

This is also known as Port Security function of some other switch. The feature allows you to bind 1-3 MAC address to one physical port. After the port and MAC address is bound, only the allowed MAC Address can access the switch.

The upper table allows you to bind the MAC address to one specific port.

MAC Address Binding

Port No.	MAC Address
1	<div style="display: flex; justify-content: space-around;"> <div style="border: 1px solid gray; padding: 2px;">.</div> <div style="border: 1px solid gray; padding: 2px;">.</div> <div style="border: 1px solid gray; padding: 2px;">.</div> <div style="border: 1px solid gray; padding: 2px;">.</div> <div style="border: 1px solid gray; padding: 2px;">.</div> <div style="border: 1px solid gray; padding: 2px;">.</div> </div> <div style="text-align: center; margin-top: 5px;"> <input type="button" value="Read"/> </div>

Select Port 01 ▾ Binding Disable ▾

Note: If you enable the MAC address binding function, the address leaning function will be disabled automatically.

Port No.	Binding Status	Port No.	Binding Status
1	Disable	14	Disable
2	Disable	15	Disable
3	Disable	16	Disable
4	Disable	17	Disable
5	Disable	18	Disable
6	Disable	19	Disable
7	Disable	20	Disable
8	Disable	21	Disable
9	Disable	22	Disable
10	Disable	23	Disable
11	Disable	24	Disable
12	Disable	25	Disable
13	Disable	26	Disable

Note: The MAC address of current management connection is 00:26:6c:48:af:57 at port 20.

Figure 11-1

- **Port No:** Displays the port number being assigned the MAC addresses.
- **MAC Address:** Type the target MAC address you want to bind for the specific port. User can assign up to 3 MAC addresses to the port.
- **Read:** Pull down the selection bar to choose a port number and click the **Read** button to show the MAC addresses bound with the port or modify the MAC addresses.
- **Select Port:** Select the port number and click **Read** button. If you don't enter any MAC Address before, the address is blank. If you have entered any MAC address, the field will display the MAC addresses you previously entered.
- **Binding:** Enable or Disable. Select **Enable** to enable the MAC Address Binding feature.

Click **Update** to have the configuration take effect.

TCP / UDP Filter

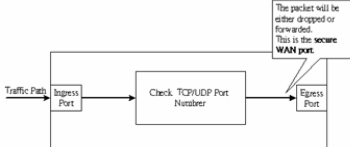
TCP_UDP Filter Configuration												
Function Enable	Disable											
Port Filtering Rule	negative											
Note: (1)The outgoing packet with selected protocol will be either forwarded or dropped at secure WAN port as the figure shown below. (2)"negative" means the selected protocol will be dropped and other protocols will be forwarded. "positive" means the selected protocol will be forwarded and other protocol will be dropped.												
Protocol	<input type="checkbox"/> FTP(20,21)	<input type="checkbox"/> SSH(22)	<input type="checkbox"/> TELNET(23)	<input type="checkbox"/> SMTP(25)	<input type="checkbox"/> DNS(53)	<input type="checkbox"/> FTP(69)	<input type="checkbox"/> HTTP(80,8080)	<input type="checkbox"/> POP3(110)	<input type="checkbox"/> NEWS(119)	<input type="checkbox"/> SNMP(123)	<input type="checkbox"/> NetBIOS(137-139)	<input type="checkbox"/> IMAP(143,220)
	<input type="checkbox"/> SNMP(161,162)	<input type="checkbox"/> HTTPS(443)	<input type="checkbox"/> XRD_RDP(3389)	<input type="checkbox"/> BOOTP_DHCP(67,68)	<input type="checkbox"/> User_Define_a	<input type="checkbox"/> User_Define_b	<input type="checkbox"/> User_Define_c	<input type="checkbox"/> User_Define_d				
Secure WAN port	<input type="checkbox"/> Port01	<input type="checkbox"/> Port02	<input type="checkbox"/> Port03	<input type="checkbox"/> Port04	<input type="checkbox"/> Port05	<input type="checkbox"/> Port06	<input type="checkbox"/> Port07	<input type="checkbox"/> Port08	<input type="checkbox"/> Port09	<input type="checkbox"/> Port10	<input type="checkbox"/> Port11	<input type="checkbox"/> Port12
	<input type="checkbox"/> Port13	<input type="checkbox"/> Port14	<input type="checkbox"/> Port15	<input type="checkbox"/> Port16	<input type="checkbox"/> Port17	<input type="checkbox"/> Port18	<input type="checkbox"/> Port19	<input type="checkbox"/> Port20	<input type="checkbox"/> Port21	<input type="checkbox"/> Port22	<input type="checkbox"/> Port23	<input type="checkbox"/> Port24
	<input type="checkbox"/> 25 <input type="checkbox"/> 26											
<input type="button" value="Update"/>												
Note:The description of Secure WAN port is shown below. 												

Figure 11-2

- **Function Enable:** To Enable or Disable the function.
- **Port Filtering Rule:** The outgoing packet with selected protocol will be either forwarded or dropped at secure WAN port as the figure shown below.
 - **"negative"** means the selected protocol will be dropped and other protocols will be forwarded.
 - **"positive"** means the selected protocol will be forwarded and other protocol will be dropped.
- **Protocol:** Select the pre-defined known protocol or User_Define Protocol number.
- **Secure WAN Port:** The port number of the Secured WAN Port. The secured WAN port is the Egress Port. The configured limit packet will be dropped.

12. Spanning Tree

The switch supports IEEE 802.1D-2004 RSTP protocol, the RSTP protocol can backward compatible to legacy Spanning Tree Protocol (STP) and 802.1w Rapid Spanning Tree Protocol (RSTP).

STP Bridge Settings

STP Bridge Settings

Spanning Tree Settings				
STP Mode	Bridge Priority	Hello Time	Max Age	Forward Delay
	(0-61440)	(1-10 Sec)	(6-40 Sec)	(4-30 Sec)
▼	<input type="text"/>	<input type="text"/>	<input type="text"/>	<input type="text"/>
<input type="button" value="Submit"/>				
<p>Note: $2 * (\text{Forward Delay} - 1) \geq \text{Max Age}$</p> <p>$\text{Max Age} \geq 2 * (\text{Hello Time} + 1)$</p> <p>Bridge Priority must be multiples of 4096</p>				

Note: If you enable the MAC address binding function, the address learning function will be disabled automatically. Then both RSTP/STP and address learning will be affected.

Bridge Status				
STP Mode	Bridge ID	Hello Time	Max Age	Forward Delay
RSTP	32768:00 0F C9 05 BB 57	2	20	15

Root Status			
Root ID	Hello Time	Max Age	Forward Delay
I'm the root bridge!	2	20	15

Figure 12-1

- **STP Mode:** Disable, STP and RSTP. Select the STP version you want to enabled.
- **Bridge Priority:** This parameter configures the spanning tree priority globally for this switch. The device with the highest priority becomes the STP root device. However, if all devices have the same priority, the device with the lowest MAC address will then become the root device. Number between 0 - 61440 in increments of 4096. Therefore, there are 24 distinct values.
- **Hello Time:** Interval (in seconds) at which the root device transmits a configuration message (BPDU frame). Number between 1-10 (default is 2).
- **Max Age:** The maximum time (in seconds) a device can wait without receiving a configuration message before attempting to reconfigure. That also means the maximum life time for a BPDU frame. Number between 6-40 (default is 20).
- **Forward Delay:** The maximum time (in seconds) the root device will wait before changing states (i.e., discarding to learning to forwarding). Number between 4 – 30 (default is 15)

STP Port Settings

The STP Port Setting page allows you to change the port priority and its path cost. After STP/RSTP is enabled, the system automatically assigns the port priority and path cost to the port. Normally, it is necessary to change the parameters, however, you may need to control the root switch or block port in some condition.

This page allows you to change the STP port setting. Select the port number, type the value of the Priority and Root Path Cost. Click "**Submit**" to apply the settings.

STP Port Settings

STP Port Settings		
Port No.	Priority (0~240)	RPC (1~200000000) 0=AUTO
▼		
<input type="button" value="Submit"/>		
Priority should be a multiple of 16		

STP Port Status						
Port No.	RPC	Priority	State	Status	Designated Bridge	Designated Port
1	Auto:0	0x80	--	Disable	--	--
2	Auto:0	0x80	--	Disable	--	--
3	Auto:0	0x80	--	Disable	--	--
4	Auto:0	0x80	--	Disable	--	--
5	Auto:0	0x80	--	Disable	--	--
6	Auto:0	0x80	--	Disable	--	--
7	Auto:0	0x80	--	Disable	--	--
8	Auto:0	0x80	--	Disable	--	--
9	Auto:0	0x80	--	Disable	--	--
10	Auto:0	0x80	--	Disable	--	--
11	Auto:0	0x80	--	Disable	--	--
12	Auto:0	0x80	--	Disable	--	--
13	Auto:0	0x80	--	Disable	--	--
14	Auto:0	0x80	--	Disable	--	--
15	Auto:0	0x80	--	Disable	--	--
16	Auto:0	0x80	--	Disable	--	--
17	Auto:0	0x80	--	Disable	--	--
18	Auto:0	0x80	--	Disable	--	--
19	Auto:0	0x80	--	Disable	--	--
20	Auto:200000	0x80	Designated Port	Forwarding	--	--
21	Auto:0	0x80	--	Disable	--	--
22	Auto:0	0x80	--	Disable	--	--
23	Auto:0	0x80	--	Disable	--	--
24	Auto:0	0x80	--	Disable	--	--
25	Auto:0	0x80	--	Disable	--	--
26	Auto:0	0x80	--	Disable	--	--

Figure 12-2

Port No: The port ID. It cannot be changed. Aggregations mean any configured trunk group.

- **Root Path Cost:** This parameter is used by the STP to determine the best path between devices. Therefore, lower values should be assigned to ports attached to faster media, and higher values assigned to ports with slower media. Set the RSTP path cost on the port. Number between 0 - 200000000. 0 means auto generated path cost.
- **State:** Show the current port state includes designated port, root port or blocked port.
- **Status:** Show the current port status includes forwarding, disable etc...

Loopback Detection Settings

In some condition, the users may incorrectly connect the wrong port and lead the network loop. The unknown broadcast, multicast may crash the whole network. The Loopback Detection feature can help you leave the risk.

Loopback Detection Settings

Loopback Detect Function	Disable ▾
Auto Wake Up	Disable ▾
Wake-Up Time Interval	10 sec ▾
	<input type="button" value="Select"/> <ul style="list-style-type: none"> 5 sec <li style="background-color: #e0e0e0;">10 sec 30 sec 60 sec

Port No.	Status
1	--
2	--
3	--
4	--
5	--
6	--
7	--
8	--
9	--
10	--
11	--
12	--
13	--
14	--
15	--
16	--
17	--
18	--
19	--
20	--
21	--
22	--
23	--
24	--
25	--
26	--

Figure 12-3

- **Loopback Detection Function:** This column allows you to enable or disable Loopback Detection function.
- **Auto Wake Up:** Once the Loopback Detection function is running, the ports maybe be disabled to avoid the loop. The **Auto Wake Up** allows you to activate the port after Time Interval passed.
- **Wake-Up Time Interval:** Select the time interval here.

Click **Submit** to apply the settings.

13. Trunking

Port trunk allows multiple links to be bundled together and act as a single physical link for increased throughput. It provides load balancing, and redundancy of links in a switched inter-network. Actually, the link does not have an inherent total bandwidth equal to the sum of its component physical links.

Traffic in a trunk is distributed across an individual link within the trunk in a deterministic method that called a hash algorithm. The hash algorithm automatically applies load balancing to the ports in the trunk. A port failure within the trunk group causes the network traffic to be directed to the remaining ports. Load balancing is maintained whenever a link in a trunk is lost or returned to service. This switch may use Port ID, Source MAC Address, Destination MAC Address, or a combination of Source MAC Address and Destination MAC Address to be the selection for Trunk Hash Algorithm.

Traffic pattern on the network should be considered carefully before applying it. When a proper hash algorithm is used, traffic is kind of randomly decided to be transmitted across either link within the trunk and load balancing will be seen.

This managed switch supports two trunk group, each trunk consists of 2~4 ports. Trunk hash algorithm can be selected according to 4 different methods.

Trunking

System Priority	1 (1~65535)
Link Aggregation Algorithm	MAC Src&Dst
Submit	

Refresh

Member	Link Group 1				Link Group 2				Link Group 3	
	P1	P2	P3	P4	P5	P6	P7	P8	P25	P26
	<input checked="" type="checkbox"/>	<input checked="" type="checkbox"/>	<input checked="" type="checkbox"/>	<input checked="" type="checkbox"/>	<input checked="" type="checkbox"/>	<input checked="" type="checkbox"/>	<input checked="" type="checkbox"/>	<input checked="" type="checkbox"/>	<input checked="" type="checkbox"/>	<input checked="" type="checkbox"/>
	--	--	--	--	--	--	--	--	--	--
State	Disable				Disable				Disable	
Type	LACP				LACP				LACP	
Operation Key	1 (1~65535)				2 (1~65535)				3 (1~65535)	
Time Out	Short Time Out				Short Time Out				Short Time Out	
Activity	Passive				Passive				Passive	
Submit										

Note: If you enable LACP on some specified ports and their link partners are normal port without LACP, these specified ports cannot trans

Figure 13-1

- **System Priority:** This column allows you to enable or disable Loopback Detection function.
- **Link Aggregation Algorithm:**
 - **MAC Src:** Hash Algorithm based on Source MAC Address.
 - **MAC Src&Dst:** Hash Algorithm based on Source & Destination MAC Address XOR result.
- **Member:** This column allows you to select the member Ports.
- **Status:** This column allows you to Enable/Disable the Trunk Group.
- **Type:** This column allows you to choose **Static** Trunking or Dynamic **LACP** Trunking. After Select the **LACP** Trunk type, the following parameters can be configured. Noted that the parameters of the both ends of the LACP should be the same.
- **Operation Key:** This column allows you to type operation key.
- **Time Out:** This column allows you to select **Long Time Out** Time or **Short Time Out** Time. The Long Time Out is around 30 seconds, the Short Time Out is around 3 seconds, however, the link partner of other supplier may not use the same value. The longer time then will be used.

Note: If you enable LACP on some specified ports and their link partners are normal port without LACP, these specified ports cannot transmit packet to/receive packet from the link partner.

14. Backup / Recovery

This function provides the users with a method to backup / recovery the switch configuration. The users can save configuration file to a specified file. If the users want to recover the original configuration, which is saved at the specified path, just enter the password and then press the **upload** button. Finally the original configuration of the switch will be recovered.

Configuration Backup/Recovery

Backup(Switch→PC)

Please check "Download" to download EEPROM contents.

Recovery(PC→Switch)

Select the image file :

Password:

Figure 14-1

15. Miscellaneous

Miscellaneous setting is used to configure output queue aging time, VLAN stride and IGMP snooping.

Miscellaneous Setting												
Output Queue Aging Time												
Aging time Disable <input type="checkbox"/> ms	The output queue aging function allows the administrator to select the aging time of a packet stored in the output queue. A packet stored in the output queue for a long time will lower the free packet buffer, resulting in the poor utilization of the buffer and the poor switch performance.											
VLAN Striding												
VLAN Striding Disable <input type="checkbox"/>	When this function is enabled, the switch will forward a uni-cast packet to the destination port. No matter whether the destination port is in the same VLAN group.											
IGMP Snooping V1 & V2												
IGMP Snooping Disable <input type="checkbox"/>	IGMP Snooping V1 & V2 function enable											
IGMP Leave Packet <input type="checkbox"/> Disable <input type="checkbox"/>	Leave packet will be forwarded to IGMP router ports.											
VLAN Uplink Setting												
Port 01 <input type="checkbox"/> Uplink1 <input type="checkbox"/> Uplink2	Port 02 <input type="checkbox"/> Uplink1 <input type="checkbox"/> Uplink2	Port 03 <input type="checkbox"/> Uplink1 <input type="checkbox"/> Uplink2	Port 04 <input type="checkbox"/> Uplink1 <input type="checkbox"/> Uplink2	Port 05 <input type="checkbox"/> Uplink1 <input type="checkbox"/> Uplink2	Port 06 <input type="checkbox"/> Uplink1 <input type="checkbox"/> Uplink2	Port 07 <input type="checkbox"/> Uplink1 <input type="checkbox"/> Uplink2	Port 08 <input type="checkbox"/> Uplink1 <input type="checkbox"/> Uplink2	Port 09 <input type="checkbox"/> Uplink1 <input type="checkbox"/> Uplink2	Port 10 <input type="checkbox"/> Uplink1 <input type="checkbox"/> Uplink2	Port 11 <input type="checkbox"/> Uplink1 <input type="checkbox"/> Uplink2	Port 12 <input type="checkbox"/> Uplink1 <input type="checkbox"/> Uplink2	Port 13 <input type="checkbox"/> Uplink1 <input type="checkbox"/> Uplink2
Port 14 <input type="checkbox"/> Uplink1 <input type="checkbox"/> Uplink2	Port 15 <input type="checkbox"/> Uplink1 <input type="checkbox"/> Uplink2	Port 16 <input type="checkbox"/> Uplink1 <input type="checkbox"/> Uplink2	Port 17 <input type="checkbox"/> Uplink1 <input type="checkbox"/> Uplink2	Port 18 <input type="checkbox"/> Uplink1 <input type="checkbox"/> Uplink2	Port 19 <input type="checkbox"/> Uplink1 <input type="checkbox"/> Uplink2	Port 20 <input type="checkbox"/> Uplink1 <input type="checkbox"/> Uplink2	Port 21 <input type="checkbox"/> Uplink1 <input type="checkbox"/> Uplink2	Port 22 <input type="checkbox"/> Uplink1 <input type="checkbox"/> Uplink2	Port 23 <input type="checkbox"/> Uplink1 <input type="checkbox"/> Uplink2	Port 24 <input type="checkbox"/> Uplink1 <input type="checkbox"/> Uplink2	Port 25 <input type="checkbox"/> Uplink1 <input type="checkbox"/> Uplink2	Port 26 <input type="checkbox"/> Uplink1 <input type="checkbox"/> Uplink2
<input type="checkbox"/> Clear Uplink1 <input type="checkbox"/> Clear Uplink2 <input type="button" value="Update"/>												

Figure 15-1

- **Output Queue Aging Time:**

- **Purpose:** This function is used to avoid the traffic jam on one port will not cause the congestion of other ports. In some application, for example the IPTV Multicast communication, the multicast stream is continuously generating from the source port, the client port may be congested because of the limited bandwidth or slow network processing ability. Then, the Pause frame of Flow Control will be generated once the packet buffer is full. With the Output Queue Aging Time feature, when a packet is stored at output queue in a switch for a long time will be aged out and become a useless packet.
- **Aging Time:** This command allows users to disable the feature or configure the aging timeout time to 200ms, 400ms, 600ms or 800ms.

- **VLAN Striding:**
 - **Purpose:** For some network environment, the network administrator probably wants to filter undesired broadcast or multicast packet to enhance the network bandwidth utilization and forward meaningful unicast to a specific destination. VLAN is a good mechanism to block broadcast packet, but it can also block the unicast packet communication between VLANs. To solve this issue, a special function called “VLAN striding” is designed to achieve this purpose. If VLAN striding is enabled, the packet will be forwarded to the destination port directly. The unicast packet can stride across VLAN.
 - **VLAN Striding:** By selecting this function, the switch will forward unicast packets to the destination port, no matter whether destination port is in the same VLAN.

- **IGMP Snooping V1 & V2:**
 - **Purpose:** A switch will, by default, flood multicast traffic to all ports in a broadcast domain. Multicast can cause unnecessary load on host devices by requiring them to process packets they have not solicited. The IGMP snooping is a feature that allows the switch to listen in on the IGMP conversation between hosts and routers. By listening (also known as snooping) to these conversations, the switch maintains a map of which ports (clients) need which multicast stream (source). Multicast may be filtered which do not need them, Multicast may be forwarded only to the IGMP group it joined.
 - **IGMP Snooping:** When this function is enabled, the switch will execute IGMP snooping version 1 and version 2 without the intervention of CPU. The IGMP report and leave packets are automatically handled by the switch. The next setting, IGMP Leave Packet can be enabled or disabled. After enabled, the Leave packet will be forwarded to IGMP router ports.

- **VLAN Uplink:**
 - **Purpose:** This switch does not implement Independent VLAN (IVL) MAC address table. It utilizes VLAN uplink to emulate the function of IVL. An independent VLAN MAC address table is based on both the source MAC address and the VLAN. In some application, if the Ethernet switch cannot build the separate MAC address table for different VLANs, there will be a conflict of MAC address table. To solve this problem, the switch controller utilizes the VLAN Uplink port to emulate the usage of Independent VLAN MAC Address Table.

- **VLAN Uplink Setting:** If VLAN uplink function is enabled and the destination port of an unicast packet is located at the next VLAN, this packet will be forwarded to the uplink port. Choose the Uplink Port X for the port ID. The Uplink X will be the uplink port of its VLAN.

Note: There is a functional conflict between VLAN striding and VLAN uplink. When both functions are enabled simultaneously, the switch will select VLAN striding and ignore the VLAN uplink setting.

16. Logout

The administrator has write access for all parameters governing the onboard agent. Users should therefore assign a new administrator password as soon as possible, and store it in a safe place.

After finished configuring the switch, you can click **Logout** to leave the configuration page.

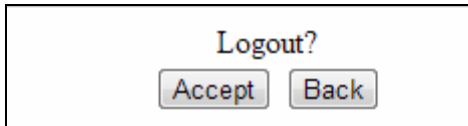


Figure 16-1

17. Restoring Default Settings

Follow the steps below to restore the switch to its default settings using the **Reset** button on the front panel of the switch.

Note: After restoring default settings, you will need to configure IP address, ID and Password again. To remain the set IP address, ID and Password, you can restore default settings using the web interface.

1. Turn on the switch.
2. Press and hold the **Reset** button for 5 seconds until all the LED start blinking.
3. Release the button. The switch is restored to its default settings.

18. Specifications

Ports		
Number of Ports	26 ports 24-port 10/100BaseTX with RJ-45 Connectors, PoE+ 2-Port Gigabit Copper/SFP Combo Uplink Port	
Performance		
MAC Address	4 K	
Buffer Memory	2.75 M bits	
Transmission Method	Store and Forward	
Transmission Media	10/100BaseTX Cat. 5 UTP/STP 1000BaseT Cat. 5 / Cat. 5E UTP/STP	
Filtering/Forwarding Rates	10 Mbps port - 14,880 pps 100 Mbps port - 148,800 pps 1000 Mbps port - 1,488,000 pps	
Smart Features		
Port Based VLAN	26	
Tagged Based VLAN	32, VID = 1~4094	
IGMP Snooping	V1 & V2	
Link Aggregation	3 groups	
Quality of Service (QoS)	High & Low priority queues, 802.1p	
Security	Port & MAC binding, 3 MAC per port	
Port Management	Port State, Speed/Duplex, Flow Control Configuration, Port Mirroring, Bandwidth Control, Broadcast Storm Control, PoE	
Administrator Management	Web Management, Password Protection, Configuration Backup/Restore, Firmware Upgrade	
Mechanical Characteristics		
LED Indicators	Per Port: Link/Act PoE Act/Status Power	
Electrical Characteristics		
PoE Power	Input	100 ~ 240 V/AC, 50 ~ 60 Hz
	Output	IEEE 802.3at Compliant Voltage, Per Port Max. 30 watts (24 Ports at Full 15.4 W / 13 Ports at Full 30 W)
Max. Power Consumption	400 W	
General		
Dimensions (H x W x D)	44 x 440 x 332 mm (1.73" x 17.3" x 13.07")	
Weight	4.7 kg (10.36 lb)	
Operating Temperature	0°C ~ 40°C (32°F ~ 104°F)	
Storage Temperature	-20°C ~ 90°C (-4°F ~ 194°F)	
Humidity	10 to 90% RH (non-condensing)	
Standards and Regulatory		
Standards	IEEE 802.3 10BaseT, IEEE 802.3u 100BaseTX, IEEE 802.3ab 1000BaseT, IEEE 802.3z 1000BaseSX/LX IEEE 802.3x Flow Control IEEE 802.3ad Link Aggregation Control Protocol IEEE 802.1Q VLAN IEEE 802.1p Class of Service IEEE 802.1D Spanning Tree Protocol IEEE 802.1w Rapid Spanning Tree Protocol IEEE 802.3at Power Over Ethernet (PoE+)	
Regulatory	CE, FCC Class A	

Note: Specifications are subject to change without prior notice.