



V2x Series Encoder Hardware Manual

V21, V22, V23, V24

2014/06/03



ACTi
Connecting Vision

Table of Contents

Precautions 4

Safety Instructions	6
---------------------------	---

Introduction 7

The List of Models	7
Package Contents.....	8
Physical Description	9
V21 / V22	9
V23 / V24	11
Mounting the Device.....	13

Connection Architecture 14

Connecting V21 / V22	14
Connecting V23 / V24	14

Making Connections 15

Connecting the Analog Camera	15
Connecting the Video Output Device (V21 / V22 only)	15
Connecting a Power Adapter (Optional)	16
Connecting the Digital Input/Output Devices (Optional).....	18
How to Connect DI/DO Device to V21 / V22	18
How to Connect DI/DO Device to V23 / V24	19
DI/DO Connection Specifications	20
Connecting Audio Devices (Optional).....	22
Connecting a Serial Device (Optional).....	23

Other Accessories 25

How to Install / Remove the Memory Card	25
How to Insert the Memory Card	25
How to Remove the Memory Card	25

Accessing the Encoder 26

Configure the IP Addresses	26
Access the Encoder	30

Precautions

Read these instructions

You should read all the safety and operating instructions before using this product.

Heed all warnings

You must adhere to all the warnings on the product and in the instruction manual. Failure to follow the safety instruction given may directly endanger people, cause damage to the system or to other equipment.

Servicing

Do not attempt to service this video device yourself as opening or removing covers may expose you to dangerous voltage or other hazards. Refer all servicing to qualified service personnel.

Trademarks

All names used in this manual are probably registered trademarks of respective companies.

Liability

Every reasonable care has been taken during the writing of this manual. Please inform your local office if you find any inaccuracies or omissions. We cannot be held responsible for any typographical or technical errors and reserve the right to make changes to the product and manuals without prior notice.

Federal Communications Commission Statement

This equipment has been tested and found to comply with the limits for a class B digital device, pursuant to Part 15 of the FCC Rules. These limits are designed to provide reasonable protection against harmful interference in a residential installation. This equipment generates, uses, and can radiate radio frequency energy and, if not installed and used in accordance with the instructions, may cause harmful interference to radio communications. However, there is no guarantee that interference will not occur in a particular installation. If this equipment does cause harmful interference to radio or television reception, which can be determined by turning the equipment off and on, the user is encouraged to try to correct the interference by one or more of the following measures:

- Reorient or relocate the receiving antenna.
- Increase the separation between the equipment and receiver.
- Connect the equipment into an outlet on a circuit different from that to which the receiver is connected.
- Consult the dealer or an experienced radio/TV technician for help.

Warning: Changes or modifications to the equipment that are not expressly approved by the responsible party for compliance could void the user's authority to operate the equipment.

European Community Compliance Statement

This product has been tested and found to comply with the limits for Class B Information Technology Equipment according to European Standard EN 55022 and EN 55024. In a domestic environment, this product may cause radio interference in which cause the user may be required to take adequate measures.

Safety Instructions

Cleaning

Disconnect this video product from the power supply before cleaning.

Attachments

Do not use attachments not recommended by the video product manufacturer as they may cause hazards.

Do not use accessories not recommended by the manufacturer

Only install this device in a dry place protected from weather

Servicing

Do not attempt to service this video product yourself. Refer all servicing to qualified service personnel.

Damage Requiring service

Disconnect this video product from the power supply immediately and refer servicing to qualified service personnel under the following conditions.

- 1) When the power-supply cord or plug is damaged
- 2) If liquid has been spilled, or objects have fallen into the video product.
- 3) If the inner parts of video product have been directly exposed to rain or water.
- 4) If the video product does not operate normally by following the operating Instructions in this manual. Adjust only those controls that are covered by the instruction manual, as an improper adjustment of other controls may result in damage, and will often require extensive work by a qualified technician to restore the video product to its normal operation.





Safety Check

Upon completion of any service or repairs to this video product, ask the service technician to perform safety checks to determine if the video product is in proper operating condition.

Introduction






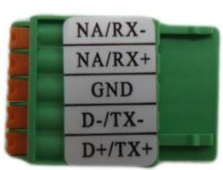

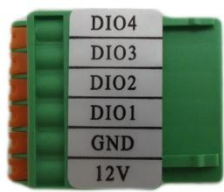


The List of Models

This hardware manual contains the following models:

V21		1-Channel 960H/D1 H.264 Video Encoder
V22		1-Channel 960H/D1 H.264 Extended Temperature Video Encoder
V23		4-Channel 960H/D1 H.264 Video Encoder
V24		4-Channel 960H/D1 H.264 Extended Temperature Video Encoder

From the installation perspective, these models are very similar; therefore one manual is used for all of them.

Package Contents

Video Encoder	Screw Pack	Power Terminal Block
		
Audio Terminal Block (for V21 / V22)	Audio Terminal Block (for V23 / V24)	Serial Communication Terminal Block
		
Digital Input/Output Terminal Block (for V21 / V22)	Digital Input/Output Terminal Block (for V23 / V24)	Quick Installation Guide
		
Warranty Card		
		

NOTE: The above pictures are for reference only; actual items may slightly vary.

Physical Description

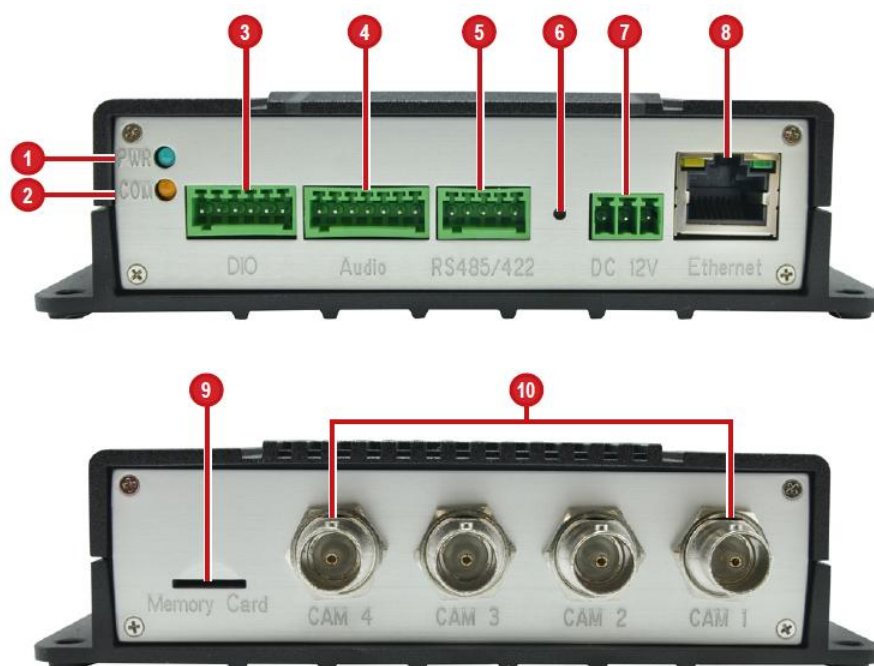
V21 / V22



Item		Description
1	Power LED	Lights up when the device is powered on.
2	Serial Port Activity LED	Lights up to when a serial device is connected to the encoder.
3	Video In Activity LED	Lights up when an analog encoder is connected to the encoder.
4	Digital Input / Output Connector	Connects to digital input or output devices, such as an alarm trigger, panic button, etc. Digital Input (DI) and Digital Output (DO) devices are used in applications like motion detection, event triggering, alarm notifications, etc. See How to Connect DI/DO Device to V21 / V22 on page 18 for information on how to connect DI/DO devices to the encoder.
5	Audio Input / Output Connector	Connects to audio input and output devices, such as a microphone with built-in amplifier, speaker, etc. See Connecting Audio Devices (Optional) on page 22 for more information. NOTE: The microphone must have a built-in amplifier. Connecting an ordinary microphone will dwarf sounds and will result in inaudible recording.

6	Serial Port Connector	Connects to the serial port of an analog encoder for RS-485 / RS-422 communication to control encoder functions like pan-tilt, zoom, etc. See Connecting a Serial Device (Optional) on page 23 for more information.
7	Reset Button	Used to restore the factory default settings, including the administrator's password. Using a pointed object, such as a pen, press and hold the Reset button for 5 seconds or until the Power LED lights up.
8	DC 12 V Power Connector	In case the encoder is connected to a non-PoE (Power over Ethernet) switch, use this connector to connect the encoder to an external power adaptor. See Connecting a Power Adapter (Optional) on page 16 for more information.
9	Ethernet Port	Connects to the network using a standard Ethernet cable.
10	Memory Card Slot	Insert a memory card (not included) into the slot for local recording purposes. See How to Install / Remove the Memory Card on page 25 for more information. NOTE: Supports only microSDHC and microSDXC cards.
11	Video Out Connector	Connects to an external monitor for video monitoring through BNC connection. See Connecting the Video Output Device (V21 / V22 only) on page 15 for more information. NOTE: Video cable with BNC connector not included in the package.
12	Video In Connector	Connects an analog camera through BNC connection. See Connecting the Analog Camera on page 15 for more information. NOTE: Video cable with BNC connector not included in the package.

V23 / V24



	Item	Description
1	Power LED	Lights up when the device is powered on.
2	Serial Port Activity LED	Lights up to when a serial device is connected to the encoder.
3	Digital Input / Output Connector	Connects to digital input or output devices, such as an alarm trigger, panic button, etc. Digital Input (DI) and Digital Output (DO) devices are used in applications like motion detection, event triggering, alarm notifications, etc. See How to Connect DI/DO Device to V23 / V24 on page 19 for information on how to connect DI/DO devices to the encoder.
4	Audio Input / Output Connector	Connects to audio input and output devices, such as a microphone with built-in amplifier, speaker, etc. See Connecting Audio Devices (Optional) on page 22 for more information. NOTE: The microphone must have a built-in amplifier. Connecting an ordinary microphone will dwarf sounds and will result in inaudible recording.

5	Serial Port Connector	Connects to the serial port of an analog encoder for RS-485 / RS-422 communication to control encoder functions like pan-tilt, zoom, etc. See Connecting a Serial Device (Optional) on page 23 for more information.
6	Reset Button	Used to restore the factory default settings, including the administrator's password. Using a pointed object, such as a pen, press and hold the Reset button for 5 seconds or until the Power LED lights up.
7	DC 12 V Power Connector	In case the encoder is connected to a non-PoE (Power over Ethernet) switch, use this connector to connect the encoder to an external power adaptor. See Connecting a Power Adapter (Optional) on page 16 for more information.
8	Ethernet Port	Connects to the network using a standard Ethernet cable.
9	Memory Card Slot	Insert a memory card (not included) into the slot for local recording purposes. See How to Install / Remove the Memory Card on page 25 for more information. NOTE: Supports only microSDHC and microSDXC cards.
10	Video In Connectors (1~4)	Connects an analog camera through BNC connection. The numbers indicate the camera channel number. See Connecting the Analog Camera on page 15 for more information. NOTE: Video cable with BNC connector not included in the package.

Mounting the Device

The encoder can be directly mounted on a flat surface, such as walls.

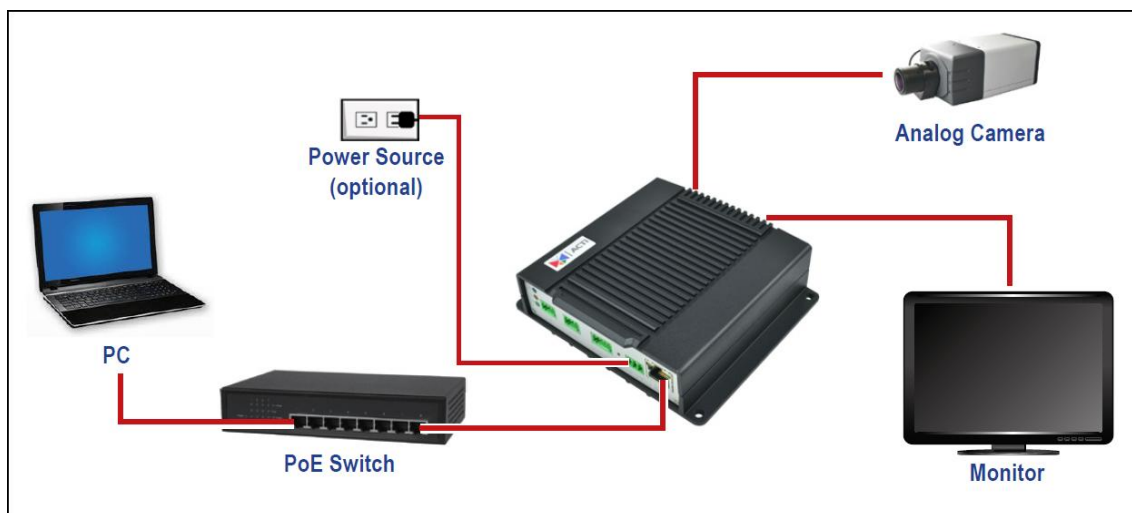
Attach the four (4) supplied screws to secure the device.



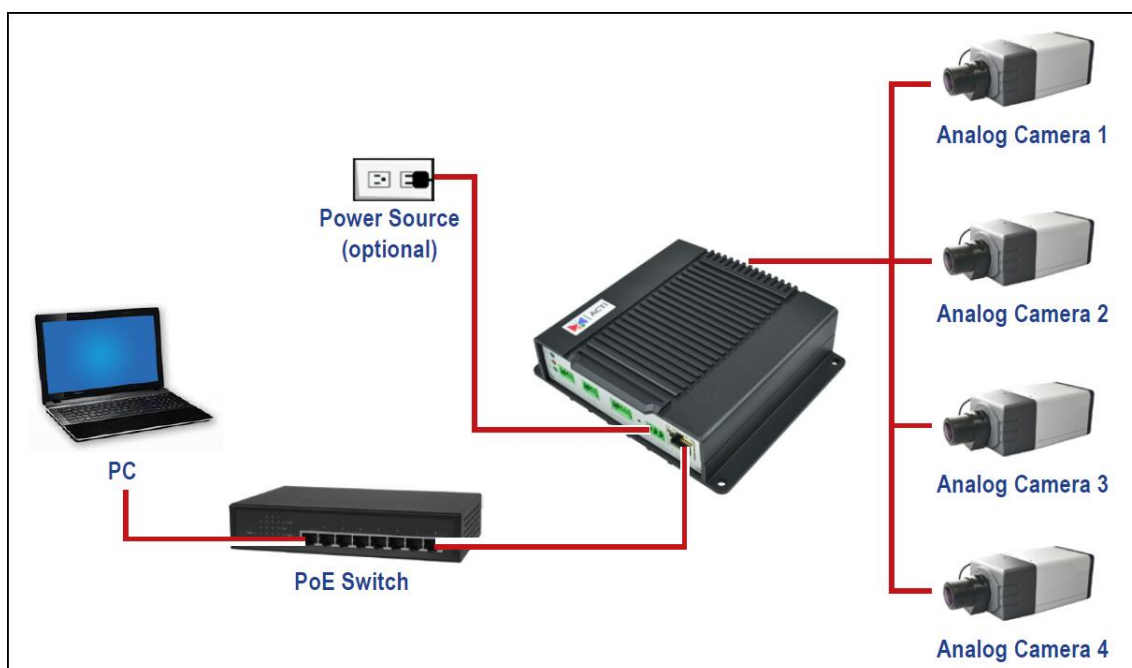
Connection Architecture

The diagrams below show examples of the basic connection within a local network.

Connecting V21 / V22



Connecting V23 / V24



Making Connections

This section describes the procedures in connecting analog cameras and a video output device and preparing the external devices that you can connect to the encoder. The encoder supports DC12V power input, Digital Input and Output (DI/DO), Audio Input and Output devices, as well as Serial Port Communication via RS-485 / RS-422 protocol using the bundled terminal blocks. The use of these devices, however, is optional.

Connecting the Analog Camera

Connect an analog camera to the **Video In** port of the encoder using a video cable with BNC connectors.



Connecting the Video Output Device (V21 / V22 only)

Because the encoder converts the analog camera signal into digital and transmits this signal through the network, monitoring can be done from any PC in the network as well as recording of the video. Therefore, the use of an external monitor is optional unless the user application requires the user to view the live display of the analog camera through a monitor. For example, for small-scale businesses where there is a person in-charge of monitoring the daily activities through a monitor while the events are recorded remotely through the network.

Connect an external composite monitor to the **Video Out** port of the encoder using a video cable with BNC connectors.

Connecting a Power Adapter (Optional)

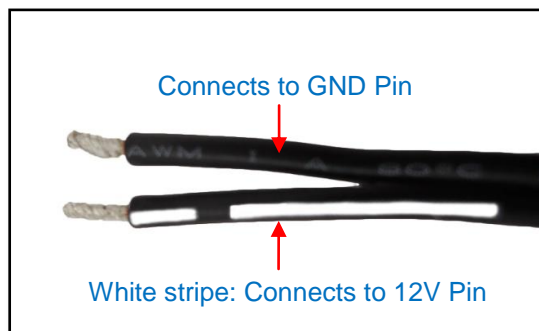
In case of using a non-PoE switch or your PoE switch has limited power supply, you can purchase a power adapter and directly connect the encoder to a power outlet. The power adapter must be connected to the supplied terminal block before use.

To do this, follow the procedures below:

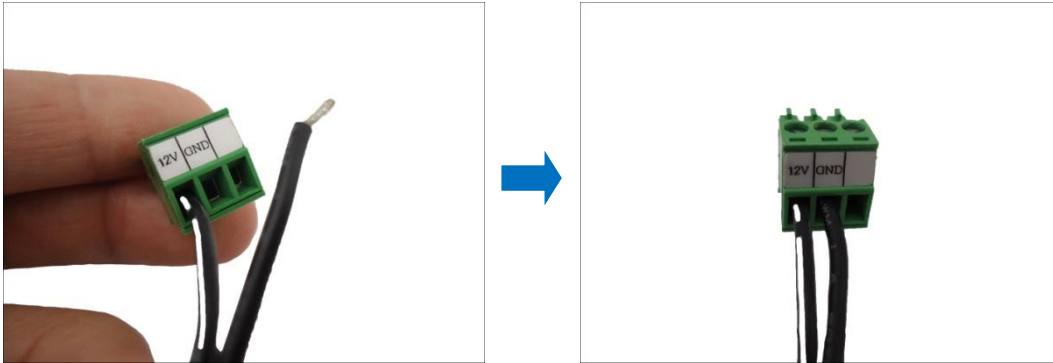
1. Loosen the screws of the **12V** and **GND** pins of the power terminal block.



2. Take note that a standard power adapter cable has two (2) different wires:



3. Connect the wire with the white stripe to the **12V** pin and the other to the **GND** pin.



4. Tighten the screws of the **12V** pin and the **GND** pins to secure the wire connection.



5. Set the prepared power adapter for connection later. Below is an example of a power adapter with an attached terminal block.



NOTE: The power adapter is not bundled in the package.

Connecting the Digital Input/Output Devices (Optional)

Depending on your surveillance needs, you may connect digital input / output devices to your encoder.

Digital Input (DI) devices can be used to notify the encoder about an activity in the camera or the encoder site. DI can be triggers of events. For example, you can connect a “panic button” to the encoder; as such when the panic button is pressed, the alarm signal will be sent through the encoder. Other common DI device applications are emergency button, smoke detector, passive infrared sensor, etc.

Digital Output (DO) devices are external devices that are activated by the encoder upon an event within the encoder (e.g. memory card removed, etc.) or triggered by motion in the camera site among others. For example, you can connect an “alarm horn” to the encoder; as such when an event occurs on the camera side (e.g. detected intruder), the alarm horn will sound. Other common DO device applications are motion-triggered lights, electric fence, magnetic door locks, etc.

How to Connect DI/DO Device to V21 / V22

1. Press and hold the orange tab as you insert the wire through the pin slot, then release the orange tab to secure the wire.



2. To connect digital input / output devices (DI/DO), map the pins to one of the pin combinations below:

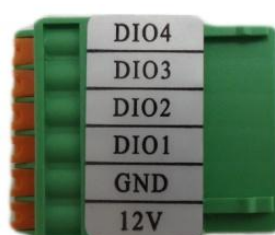
Device	Pin Label	Mapping Instructions
Digital Output (DO)	DIO	Connect the wires of the output device to DIO and 12V .
	12V	
Digital Input (DI)	DI	Connect the wires of the input device to DI and GND .
	GND	

3. Connect the terminal block to the DIO connector of the encoder.

How to Connect DI/DO Device to V23 / V24

The digital input and output pins of V23 / V24 are configurable; meaning, either a digital input or digital output device can be connected to a particular DIO pin. Once connected, the pin must be defined through the Web Configurator (see the Encoder Firmware Manual for more information).

1. Configure the DIO ports in Web Configurator (see the Encoder Firmware Manual for more information).
2. Press and hold the orange tab as you insert the wire through the pin slot, then release the orange tab to secure the wire.



3. To connect digital input / output devices (DI/DO), map the pins to one of the pin combinations below:

Device	Pin Label	Mapping Instructions
Digital Output (DO)	DIO (port number)	Connect the wires of the output device to a DIO and 12V .
	12V	
Digital Input (DI)	DIO (port number)	Connect the wires of the input device to DI and GND .
	GND	

NOTE: For every digital output device, a wire must also be mapped to the **12V** pin. Same with for every digital input device, a wire must also be mapped to the **GND** pin. The **GND** and **12V** pins may be mapped with more than one device.

4. Connect the terminal block to the DIO connector of the encoder.

DI/DO Connection Specifications

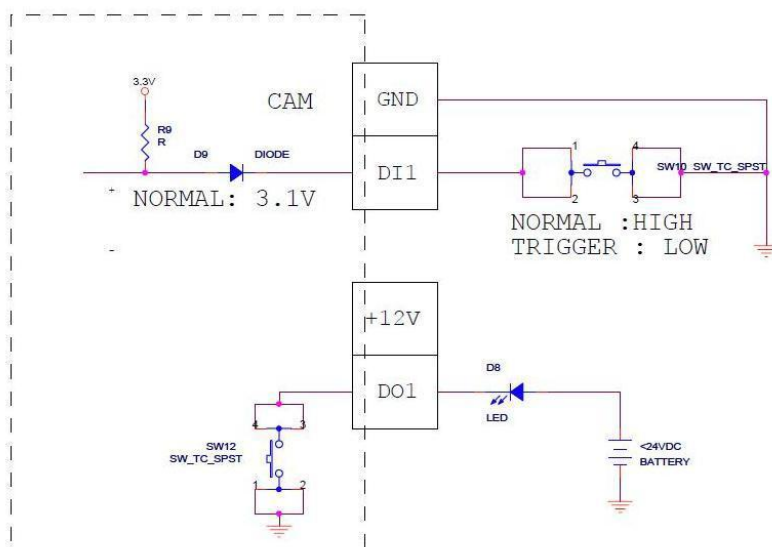
The table below shows the DI/DO connection specifications:

Device			
DI	Connection design		TTL - compatible logic levels
	Voltage	To trigger (low)	Logic level 0: 0V ~ 0.4V
		Normal (high)	Logic level 1: 3.1V ~ 30V
	Current		10mA ~ 100mA
DO	Connection design		Transistor (Open Collector)
	Voltage & Current		< 24V DC, < 50mA

Typical Connection

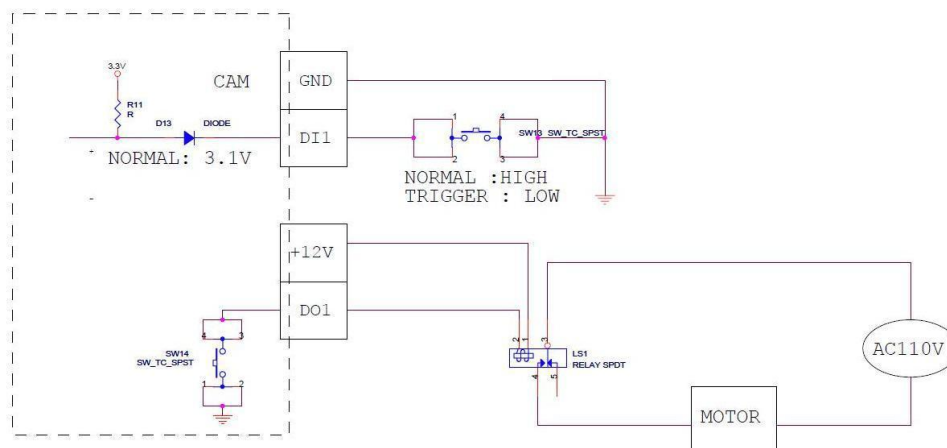
Based on these specifications, if the DI device has a voltage of 0V ~ 30V or the DO device has a voltage of < 24V (< 50mA), then the encoder can supply internal power to these devices and there is no need to connect the DI/DO device to an external power source.

Use the **GND** and **DI** pins to connect a DI device and use the **DIO** and **12V** pins to connect a DO device. See wiring scheme below:



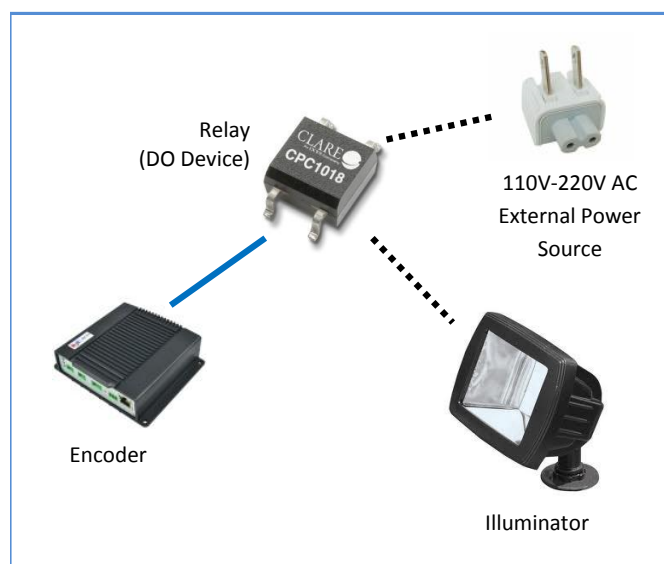
High Voltage DO Device Connection

Even though the encoder provides 12V power, this may not be enough for some high voltage DO devices, such as a ceiling light or a motor that opens or closes a gate. In this case, there is a need to connect an external relay. See wiring scheme below:



Note that when choosing an appropriate relay, please refer to its specifications and make sure they match the above design. The triggering circuit voltage has to be around 12V DC and the switch-controlled circuit voltage has to match the external power supply (e.g. 110V AC or 220V AC).

The illustration below is a graphic example of connecting a relay to a high voltage DO device.



NOTE: For more information on DI/DO connections, please refer to the Knowledge Base article [All about Digital Input and Digital Output](http://www.acti.com/kb/detail.asp?KB_ID=KB20091230001) downloadable from the link below (http://www.acti.com/kb/detail.asp?KB_ID=KB20091230001).

Connecting Audio Devices (Optional)

Audio input / output devices, such as an active microphone or speaker can be connected to the encoder using the supplied terminal block.

Press and hold the orange tab as you insert the wire through the pin slot, then release the orange tab to secure the wire.



V21 / V22 Terminal Block



V23 / V24 Terminal Block

To connect audio devices, map the pins to one of the pin combinations below:

Device	Pin Label	Mapping Instructions
Audio Output	AOUT	Connect the wires of the audio output device to AOUT and GND .
	GND	
Audio Input	AIN	Connect the wires of the audio input device to AIN and GND . For V23 / V24 models, the number after AIN is the camera channel corresponding the audio input device (e.g. AIN1).
	GND	

NOTE:

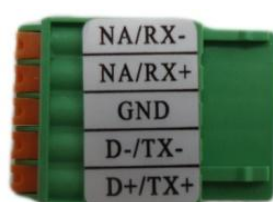
- The **GND** pin may be mapped with more than one audio device.
- For more information about AUDIO in connections, please refer to the Knowledge Base article [How to Use Audio-in of ACTi Encoders](http://www.acti.com/support/KnowledgeBase/outside/detail.asp?KB_ID=KB20100114003), downloadable from the link below
http://www.acti.com/support/KnowledgeBase/outside/detail.asp?KB_ID=KB20100114003.

Connecting a Serial Device (Optional)

The encoder can be connected to a camera with Pan-Tilt (PT) functions or a PT Scanner (Pan-Tilt Head) using the serial port connector. This allows the encoder to do pan and tilt using protocols, such as Pelco-D, etc. Most PT devices accept protocol commands via RS-485 or RS-422 connection, which are both supported by the encoder.

Check the connection available on the PT device and connect it to the encoder following the procedures below.

1. Map the wires from the PT device to the encoder using the supplied terminal block according to one of the tables below.



Via RS-485 Connection

Pin Label	Encoder Pin	PT Device Pin
RX-	-	-
RX+	-	-
GND	GROUND PIN	
TX- / D-	TX -	DATA -
TX+ / D+	TX +	DATA +

Via RS-422 Connection

Pin Label	Encoder Pin	PT Device Pin
Rx-	RX -	TX -
RX+	RX +	TX +
GND	GROUND PIN	
TX -	TX -	RX -
TX +	TX +	RX +

NOTE: The pins of the PT Scanner may be labeled differently depending on the location or country where the scanner is purchased. For example, some devices may have RS-485 **DATA+** pins labeled as "TX+", "RX+", "A" or "485+", etc. Refer to the scanner documentation or contact the manufacturer to verify the corresponding pin labels and ensure proper wiring connection.



CAUTION: Incorrect wiring may cause damage to the connected devices.

DISCLAIMER: ACTi will not be responsible for any damage caused by improper wiring.

2. Connect a ground wire to the **GND** terminal pin to complete the connection.

For more information on connecting PT scanners, please refer to the Knowledge Base article:

[Pan and Tilt Scanner for ACTi Zoom Encoders](#)

http://www.acti.com/support/KnowledgeBase/outside/detail.asp?KB_ID=KB20110120001

available on the website.

Other Accessories

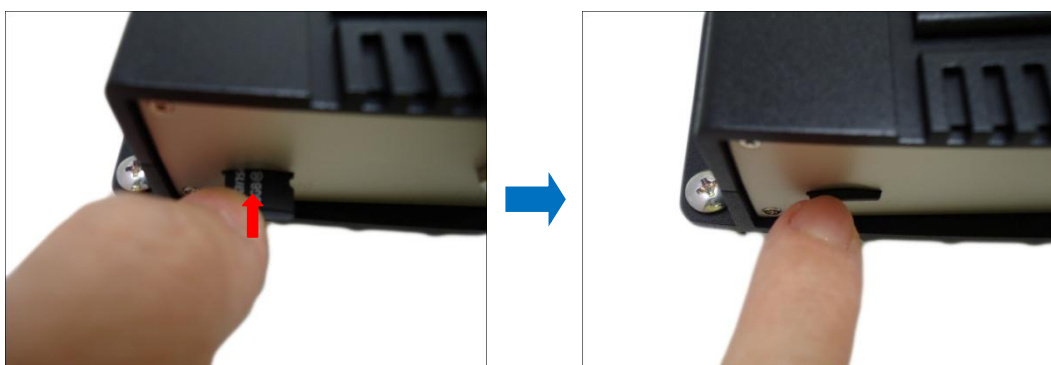
How to Install / Remove the Memory Card

The encoder supports local video recording or saving of snapshots to a memory card.

NOTE: Supports microSDHC and microSDXC cards.

How to Insert the Memory Card

Insert a memory card into the card slot with the metallic contacts facing down the encoder. Push the card until it clicks into place.



How to Remove the Memory Card

In case there is a need to remove the card, make sure to access the encoder Web Configurator to safely “unmount” the card first (see the encoder Firmware manual for more information). Once unmounted from the firmware, push the card to eject it from the slot.

Accessing the Encoder

Configure the IP Addresses

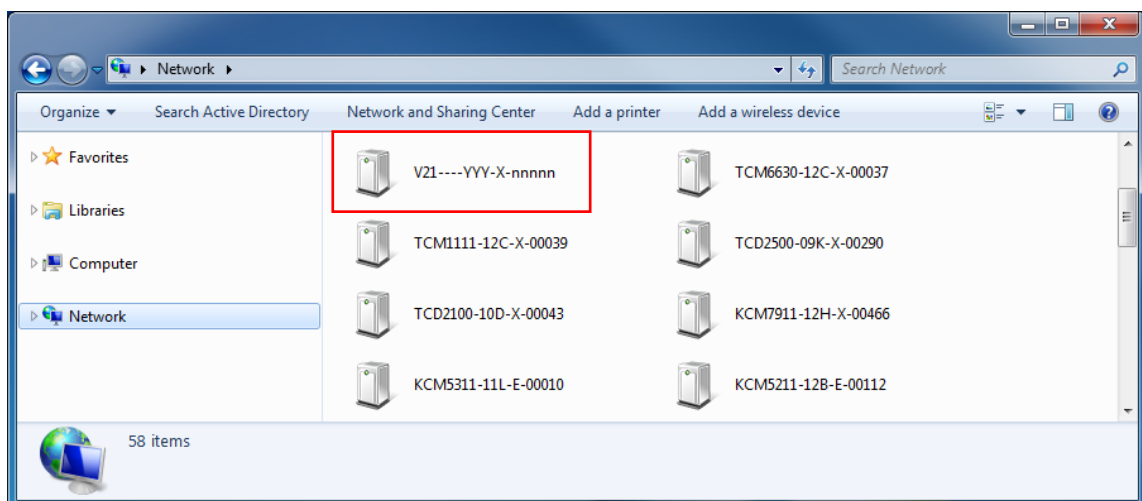
In order to be able to communicate with the encoder from your PC, both the encoder and the PC have to be within the same network segment. In most cases, it means that they both should have very similar IP addresses, where only the last number of the IP address is different from each other. There are 2 different approaches to IP Address management in Local Area Networks – by DHCP Server or Manually.

Using DHCP server to assign IP addresses:

If you have connected the computer and the encoder into the network that has a DHCP server running, then you do not need to configure the IP addresses at all – both the encoder and the PC would request a unique IP address from DHCP server automatically. In such case, the encoder will immediately be ready for the access from the PC. The user, however, might not know the IP address of the encoder yet. It is necessary to know the IP address of the encoder in order to be able to access it by using a Web browser.

The quickest way to discover the encoders in the network is to use the simplest network search, built in the Windows system – just by pressing the “Network” icon, all the encoders of the local area network will be discovered by Windows thanks to the UPnP function support of our encoders.

In the example below, we successfully the encoder model that we had just connected to the network.

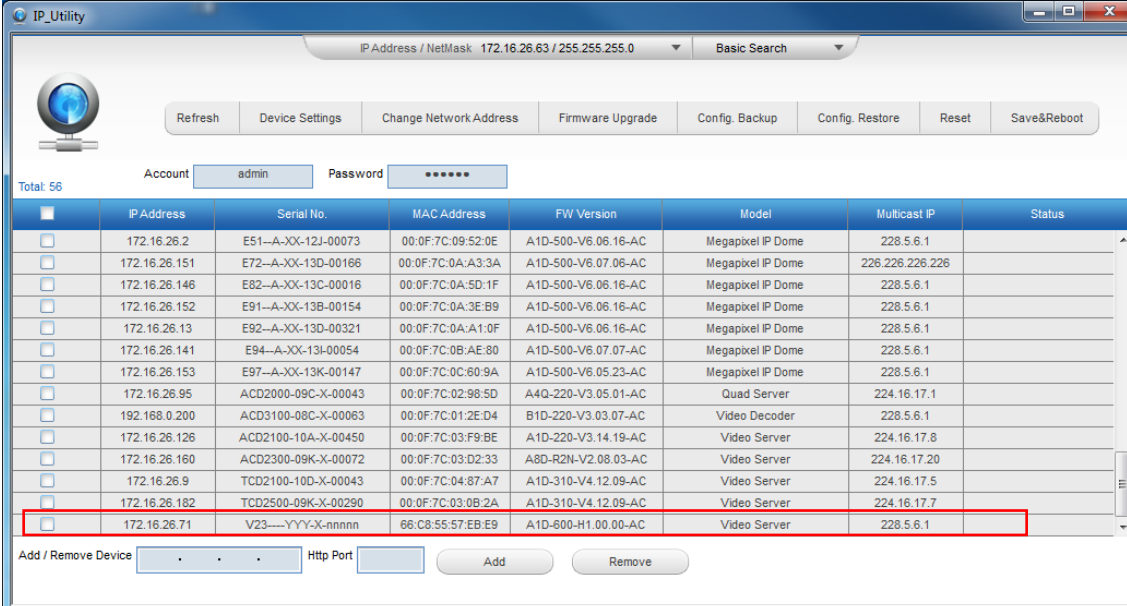


Double-click the mouse button on the encoder model, the default browser of the PC is automatically launched and the IP address of the target encoder is already filled in the address bar of the browser.

If you work with our encoders regularly, then **there is even a better way to discover the encoders in the network** – by using **IP Utility**. The IP Utility is a light software tool that can not only discover the encoders, but also list lots of valuable information, such as IP and MAC addresses, serial numbers, firmware versions, etc, and allows quick configuration of multiple devices at the same time.

The IP Utility can be downloaded for free from http://www.acti.com/IP_Utility.

With just one click, you can launch the IP Utility and there will be an instant report as follows:



The screenshot shows the IP Utility application window. At the top, there's a status bar with 'IP Address / NetMask: 172.16.26.63 / 255.255.255.0' and a 'Basic Search' dropdown. Below this is a toolbar with buttons: Refresh, Device Settings, Change Network Address, Firmware Upgrade, Config. Backup, Config. Restore, Reset, and Save&Reboot. A login section shows 'Account: admin' and 'Password: *****'. The main area displays a table of 56 total devices. The table has columns: IP Address, Serial No., MAC Address, FW Version, Model, Multicast IP, and Status. The last row is highlighted with a red border.

	IP Address	Serial No.	MAC Address	FW Version	Model	Multicast IP	Status
<input type="checkbox"/>	172.16.26.2	E51--A-XX-12J-00073	00:0F:7C:09:52:0E	A1D-500-V6.06.16-AC	Megapixel IP Dome	228.5.6.1	
<input type="checkbox"/>	172.16.26.151	E72--A-XX-13D-00166	00:0F:7C:0A:A3:3A	A1D-500-V6.07.06-AC	Megapixel IP Dome	228.226.226.226	
<input type="checkbox"/>	172.16.26.146	E82--A-XX-13C-00016	00:0F:7C:0A:5D:1F	A1D-500-V6.06.16-AC	Megapixel IP Dome	228.5.6.1	
<input type="checkbox"/>	172.16.26.152	E91--A-XX-13B-00154	00:0F:7C:0A:3E:B9	A1D-500-V6.06.16-AC	Megapixel IP Dome	228.5.6.1	
<input type="checkbox"/>	172.16.26.13	E92--A-XX-13D-00321	00:0F:7C:0A:A1:0F	A1D-500-V6.06.16-AC	Megapixel IP Dome	228.5.6.1	
<input type="checkbox"/>	172.16.26.141	E94--A-XX-13I-00054	00:0F:7C:0B:AE:80	A1D-500-V6.07.07-AC	Megapixel IP Dome	228.5.6.1	
<input type="checkbox"/>	172.16.26.153	E97--A-XX-13K-00147	00:0F:7C:0C:60:9A	A1D-500-V6.05.23-AC	Megapixel IP Dome	228.5.6.1	
<input type="checkbox"/>	172.16.26.95	ACD2000-09C-X-00043	00:0F:7C:02:98:5D	A4Q-220-V3.05.01-AC	Quad Server	224.16.17.1	
<input type="checkbox"/>	192.168.0.200	ACD3100-08C-X-00063	00:0F:7C:01:2E:D4	B1D-220-V3.03.07-AC	Video Decoder	228.5.6.1	
<input type="checkbox"/>	172.16.26.126	ACD2100-10A-X-00450	00:0F:7C:03:F9:BE	A1D-220-V3.14.19-AC	Video Server	224.16.17.8	
<input type="checkbox"/>	172.16.26.160	ACD2300-09K-X-00072	00:0F:7C:03:D2:33	A8D-R2N-V2.08.03-AC	Video Server	224.16.17.20	
<input type="checkbox"/>	172.16.26.9	TCD2100-10D-X-00043	00:0F:7C:04:87:A7	A1D-310-V4.12.09-AC	Video Server	224.16.17.5	
<input type="checkbox"/>	172.16.26.182	TCD2500-09K-X-00290	00:0F:7C:03:0B:2A	A1D-310-V4.12.09-AC	Video Server	224.16.17.7	
<input type="checkbox"/>	172.16.26.71	V23----YY-Y-X-nnnnn	66:C8:55:57:EB:E9	A1D-600-H1.00.00-AC	Video Server	228.5.6.1	

At the bottom, there's an 'Add / Remove Device' section with a text input field, a 'Http Port' dropdown, and 'Add' and 'Remove' buttons.

You can quickly notice the encoder model in the list. Click on the IP address to automatically launch the default browser of the PC with the IP address of the target encoder filled in the address bar of the browser already.

Use the default IP address of an encoder:

If there is no DHCP server in the given network, the user may have to assign the IP addresses to both PC and encoder manually to make sure they are in the same network segment.

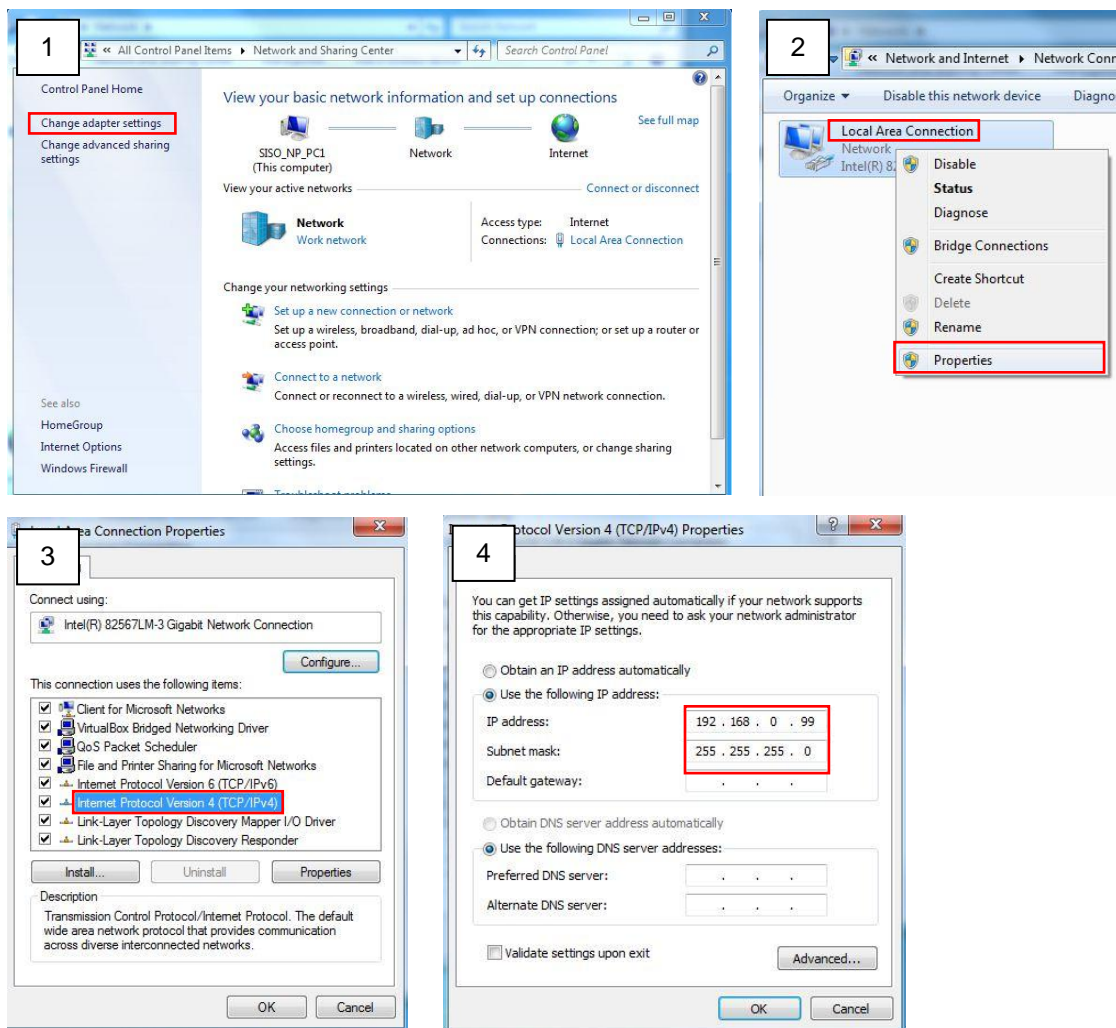
When the encoder is plugged into network and it does not detect any DHCP services, it will automatically assign itself a default IP:

192.168.0.100

Whereas the default port number would be **80**. In order to access that encoder, the IP address of the PC has to be configured to match the network segment of the encoder.

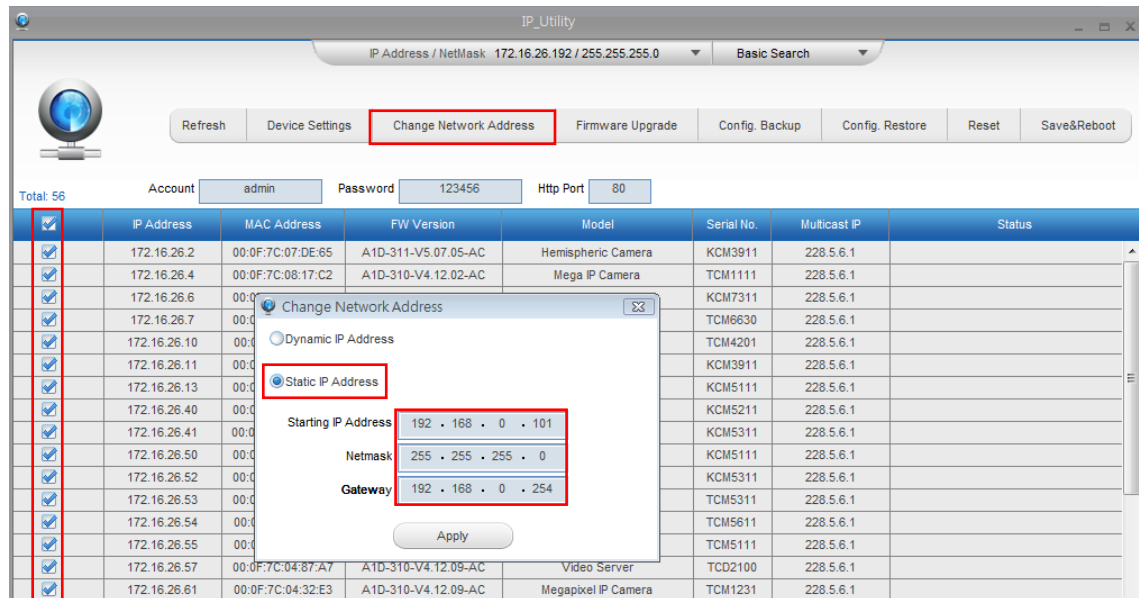
Manually adjust the IP address of the PC:

In the following example, based on Windows 7, we will configure the IP address to **192.168.0.99** and set Subnet Mask to **255.255.255.0** by using the steps below:



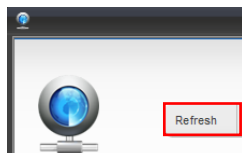
Manually adjust the IP addresses of multiple encoders:

If there are more than 1 encoder to be used in the same local area network and there is no DHCP server to assign unique IP addresses to each of them, all of the encoders would then have the initial IP address of **192.168.0.100**, which is not a proper situation for network devices – all the IP addresses have to be different from each other. The easiest way to assign encoders the IP addresses is by using **IP Utility**:



With the procedure shown above, all the encoders will have unique IP addresses, starting from 192.168.0.101. In case there are 20 encoders selected, the last one of the encoders would have the IP 192.168.0.120.

Later, by pressing the “Refresh” button of the IP Utility, you will be able to see the list of encoders with their new IP addresses.



Please note that it is also possible to change the IP addresses manually by using the Web browser. In such case, please plug in only one encoder at a time, and change its IP address by using the Web browser before plugging in the next one. This way, the Web browser will not be confused about two devices having the same IP address at the same time.

Access the Encoder

Now that the encoder and the PC are both having their unique IP addresses and are under the same network segment, it is possible to use the Web browser of the PC to access the encoder.

You can use **any of the browsers** to access the encoder, however, the full functionality is provided only for **Microsoft Internet Explorer**.

The browser functionality comparison:

Functionality	Internet Explorer	Other browsers
Live Video	Yes	Yes*
Live Video Area Resizable	Yes	No
PTZ Control	Yes	Yes
Capture the snapshot	Yes	Yes
Video overlay based configuration (Motion Detection regions, Privacy Mask regions)	Yes	No
All the other configurations	Yes	Yes

* When using non-Internet Explorer browsers, free third-party software plug-ins must be installed to the PC first to be able to get the live video feed from the encoder:

Browser	Required Plug-In
Safari	QuickTime (http://www.apple.com/quicktime/download/)
Other non-Internet Explorer browsers	Basic VLC Media Player (http://www.videolan.org)

Disclaimer Notice: The encoder manufacturer does not guarantee the compatibility of its encoders with VLC player or QuickTime – since these are third party softwares. The third party has the right to modify their utility any time which might affect the compatibility. In such cases, please use Internet Explorer browser instead.

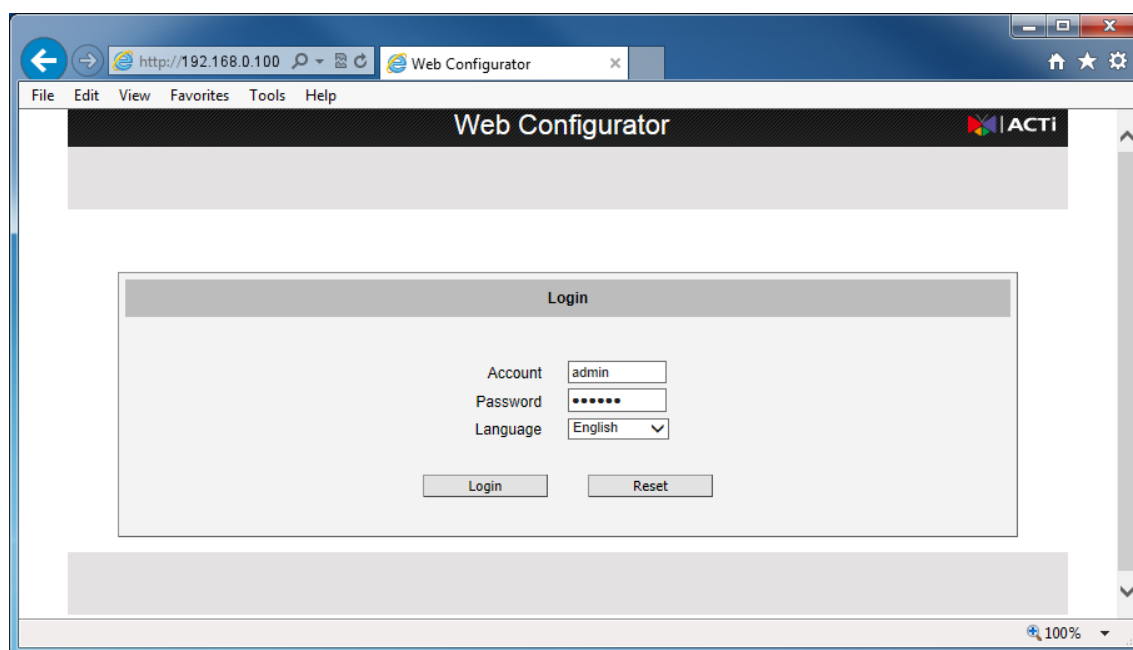
When using Internet Explorer browser, the ActiveX control for video stream management will be downloaded from the encoder directly – the user just has to accept the use of such control when prompted so. No other third party utilities are required to be installed in such case.

The following examples in this manual are based on Internet Explorer browser in order to cover all functions of the encoder.

Assuming that the encoder's IP address is **192.168.0.100**, you can access it by opening the Web browser and typing the following address into Web browser's address bar:

http://192.168.0.100

Upon successful connection to the encoder, the user interface called **Web Configurator** would appear together with the login page. The HTTP port number was not added behind the IP address since the default HTTP port of the encoder is 80, which can be omitted from the address for convenience.



Before logging in, you need to know the factory default Account and Password of the encoder.

Account: **Admin**

Password: **123456**



Copyright © 2014, ACTi Corporation All Rights Reserved

7F, No. 1, Alley 20, Lane 407, Sec. 2, Ti-Ding Blvd., Neihu District, Taipei, Taiwan 114, R.O.C.

TEL : +886-2-2656-2588 FAX : +886-2-2656-2599

Email: sales@acti.com