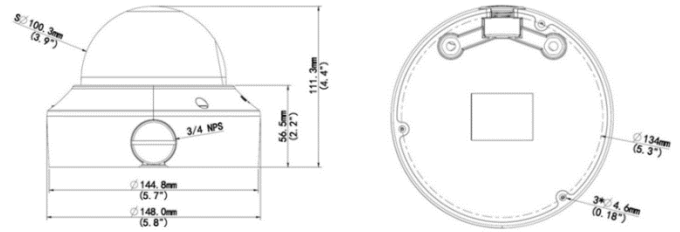




# TDV45R-W

4MP WDR (Motorized) VF  
Vandal-resistant Network IR Dome Camera



## Key Features

### Optics

- Day/night functionality
- Smart IR, up to 30m (98ft) IR distance
- Up to 120dB Optical WDR(Wide Dynamic Range)
- Lowlight surveillance
- 3D DNR (Digital Noise Reduction)
- Built-in motorized lens for remote zoom

### Compression

- H.265
- Triple streams
- ROI (Region of Interest)
- 9:16 corridor mode

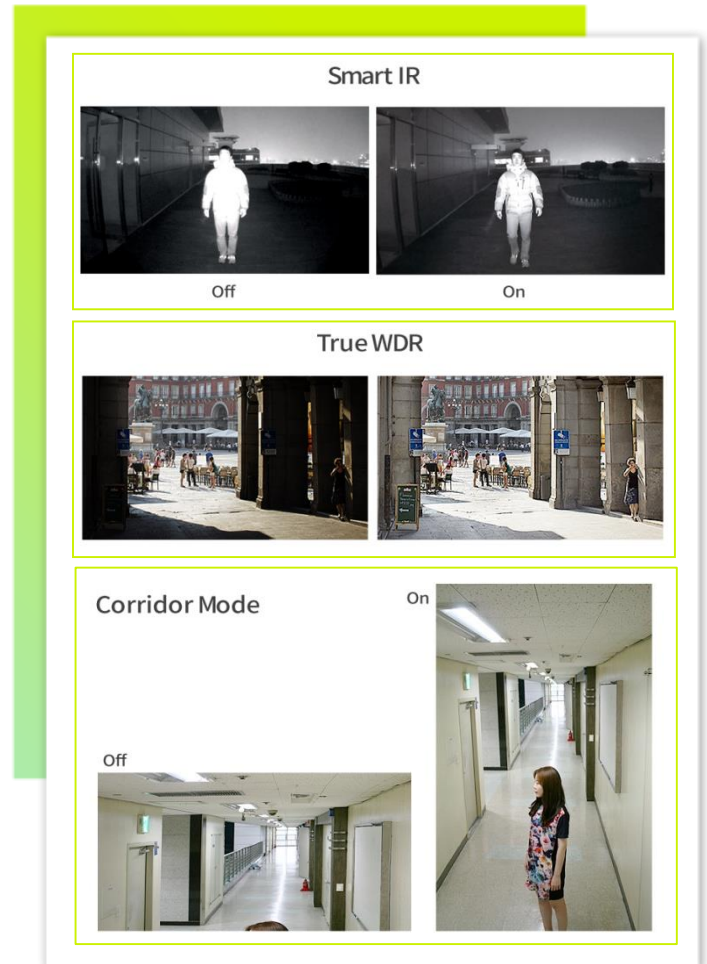
### Network

- ONVIF Conformance

### Structure

- Support PoE power supply
- Built-in PoE splitter that outputs DC 12V
- Wide temperature range: -40°C to 60°C (-40°F to 140°F)
- Wide voltage range of  $\pm 25\%$
- IK10 vandal resistant
- IP66

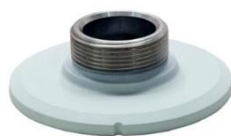
## Image



## Accessories



**AJB133**  
Dimensions :  $\Phi 145\text{mm} \times 40\text{mm}$   
Weight : 0.24Kg



**AAP132**  
Dimensions :  $\Phi 149\text{mm} \times 44\text{mm}$   
Weight : 0.2Kg



**APM331**  
Dimensions :  $\Phi 116.5\text{mm} \times 239\text{mm}$   
Weight : 0.67Kg

## Specifications

| TDV45R-W               |  |
|------------------------|--|
| <b>Camera</b>          |  |
| Sensor                 | 1/3", 4.0 megapixel, progressive scan CMOS   |
| Shutter                | Auto/Manual, 1/6~1/8000 s  |
| Lens                   | 2.8~12 mm@F1.6; Angle of View (H): 95° (wide) ~29° (tele)  |
| Zoom/Focus             | Motor drive  |
| Day/Night              | IR-cut filter with auto switch (ICR)   |
| Min. Illumination      | Colour: 0.02 Lux (F1.6, AGC ON)<br>0 Lux with IR   |
| IR Range               | Up to 30m (98ft) IR range  |
| S/N                    | ≥55dB  |
| WDR                    | Optical WDR (up to 120dB)  |
| <b>Video</b>           |  |
| Max. Resolution        | 2592 × 1520  |
| Video Compression      | H.265, H.264, MJPEG  |
| Frame Rate             | 4MP (2592×1520): Max. 20 fps; 4MP (2560×1440): Max. 25 fps<br>3MP (2048×1520): Max. 30 fps; 1080P (1920×1080): Max. 25 fps |
| 9:16 Corridor Mode     | Supported  |
| ROI                    | Supported  |
| Video Streaming        | Triple   |
| OSD                    | Up to 8 OSDs   |
| Privacy Mask           | Up to 4 areas  |
| <b>Audio</b>           |  |
| Audio Compression      | G.711  |
| Two-way audio          | Supported  |
| <b>Storage</b>         |  |
| Edge Storage           | Micro SD, Up to 128 GB   |
| <b>Network</b>         |  |
| Protocols              | L2TP, IPv4, IGMP, ICMP, ARP, TCP, UDP, DHCP, PPPoE, RTP, RTSP, NTP, FTP, HTTP, SNMP, SIP                                   |
| Compatible Integration | ONVIF, API   |
| <b>Interface</b>       |  |
| Audio I/O              | Audio cable  |
|                        | Input: impedance 35 kΩ; amplitude 2 V [p-p]  |
|                        | Output: impedance 600 Ω; amplitude 2 V [p-p]   |
| Alarm I/O              | 1/ 1   |
| Network                | 1 RJ45 10M/100M Base-TX Ethernet   |
| Video Output           | 1 BNC, impedance 75 Ω; amplitude 1 V [p-p]   |
| Reset                  | 1 Reset Button   |
| Power Output           | DC12V Power Output With PoE  |
| <b>General</b>         |  |
| Power                  | 12 V DC, or PoE (IEEE802.3 af)   |
|                        | Power consumption: Max.6.6 W (PoE :Max.7.2 W)  |
| Dimensions (Ø x H)     | Φ148 x 111.3 mm (Ø5.8" x 4.4")   |
| Weight                 | 0.75 kg (1.7lb)  |
| Working Environment    | -40°C ~ +60°C (-40°F ~ 140°F), Humidity ≤ 95% RH(non-condensing)   |
| Vandal Resistant       | IK10   |
| Ingress Protection     | IP66   |