

Quick Installation Guide

GNR-3000

BEFORE YOU START

Thank you for purchasing ACTi GNR-3000 Standalone Network Video Recorder. This guide contains all the information you need to quickly setup ACTi GNR server system via local display interface. For detailed instructions on installation or operations, please refer to System Administrator's Manual or User's Manual on ACTi corporate website.

The items below are prerequisite for installation:

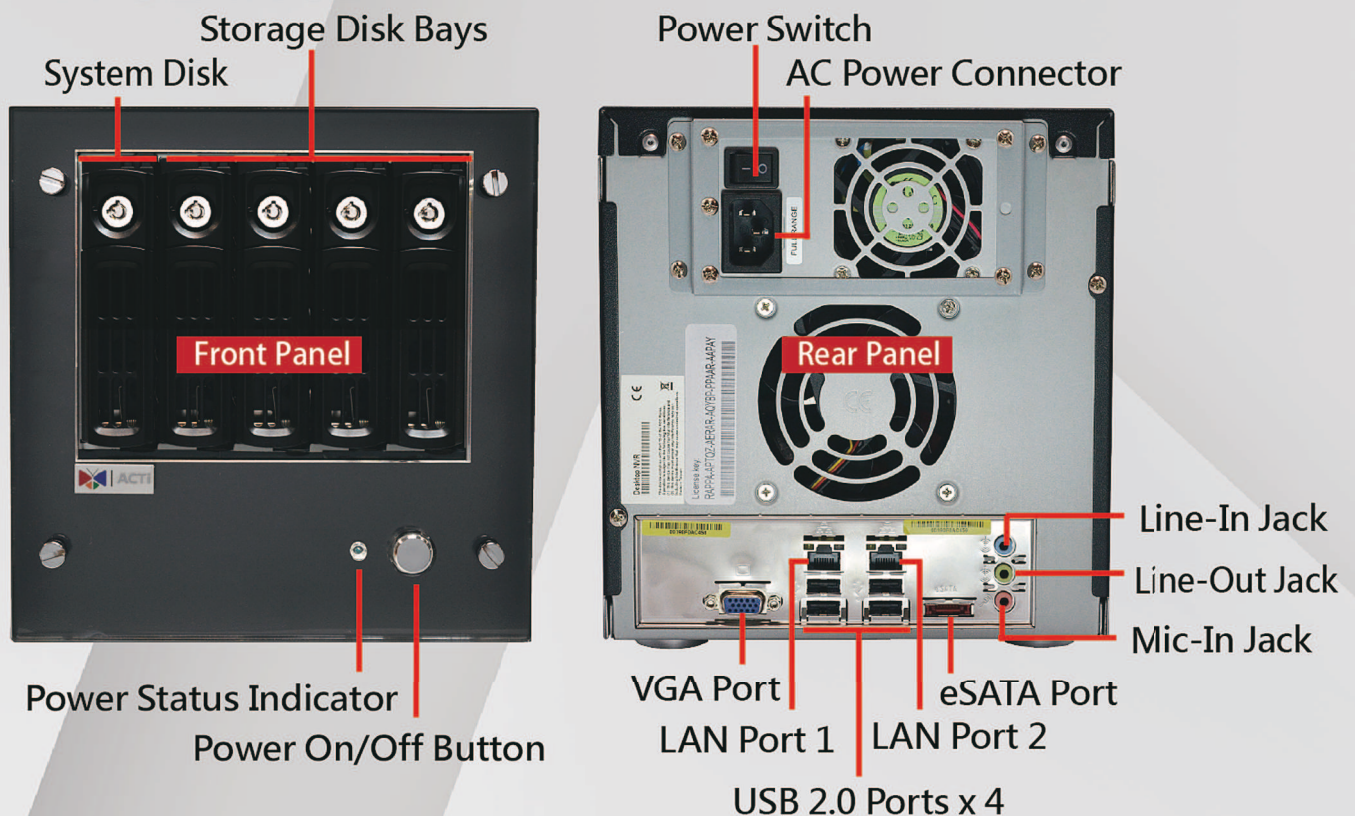
- Monitor (supports 1024x768 minimum resolution) with VGA cable
- RJ-45 network cable • Network Switch • USB mouse • USB keyboard
- At least one certified 3.5-inch SATA hard disk for recording. Please use the hard disks ACTi tested to be compatible with GNR-3000. You may find the certified models in ACTi Certified HDD List for Standalone Network Video Recorders via <http://www.acti.com/hdd>

01 UNPACK

The package includes the following items:

- GNR-3000 x 1 • Power Cord x 1 (Adapter type varies by region) • Accessories • Warranty Card

02 AT A GLANCE



03 HARD DISK INSTALLATION

TURN OFF THE DEVICE before you move the trays. Repeat the following steps to install the hard disks into below slots.

Storage Disk Bays

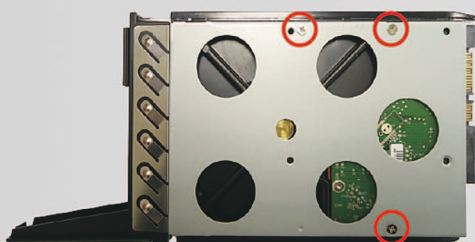


System Disk
(DO NOT REMOVE)

Mount The Disk

Step 3

Mount the disk by locking it with supplied disk screws to the bottom of the tray.



Remove The Tray

Step 1

Slide the Lock Tab up, the Hinge Tab will pop out by itself.



Step 2

Pull the Hinge Tab to 90 degrees from the front, pull out the tray.



Install The Tray

Step 4

Press on Lock Tab, push the tray into the bay until it stops.



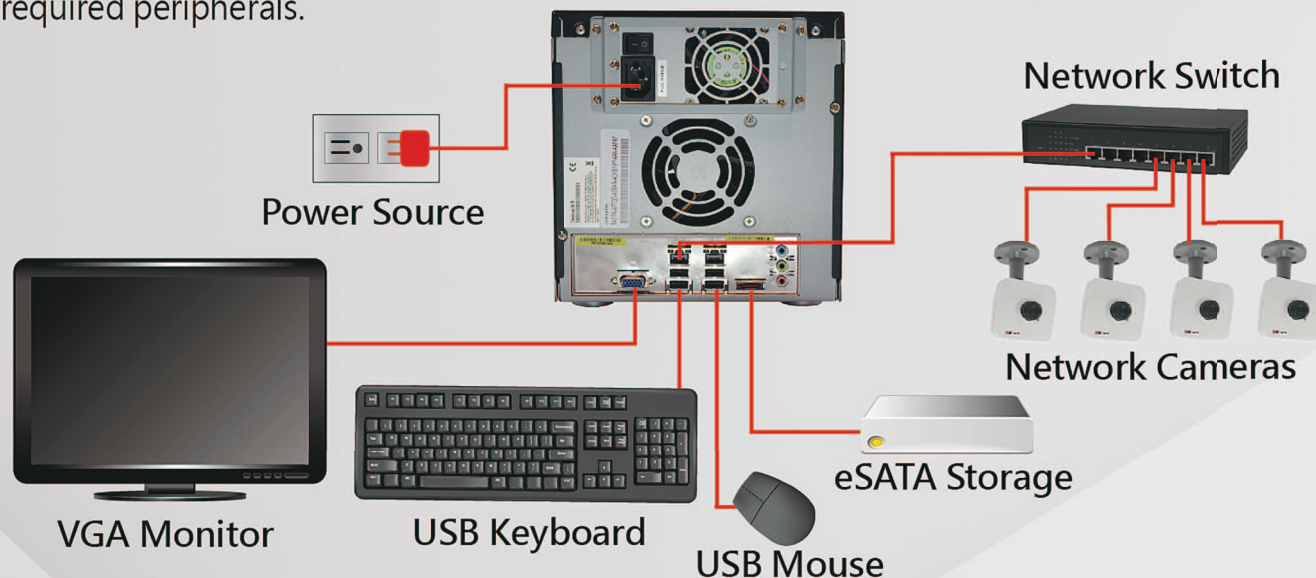
Step 5

Press on the Hinge Tab until it clicks into place.




04 CONNECT THE DEVICES

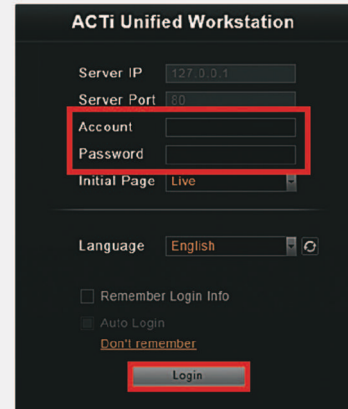
The example below displays a local network consisting of only GNR-3000, network cameras and required peripherals.



05 STARTUP

- (1) On rear panel, press down the **Power Switch** to the side with "I" mark. 
- (2) On front panel, press down **Power Button** to turn on the device.
- (3) On Windows login screen, input the password "123456" to login as Administrator.

06 LOGIN



ACTi Unified Workstation

Server IP: 127.0.0.1
 Server Port: 80
 Account:
 Password:
 Initial Page: Live
 Language: English
☐ Remember Login Info
☐ Auto Login
[Don't remember](#)
 Login

On Login screen, input:

Account: **admin**
 Password: **123456**

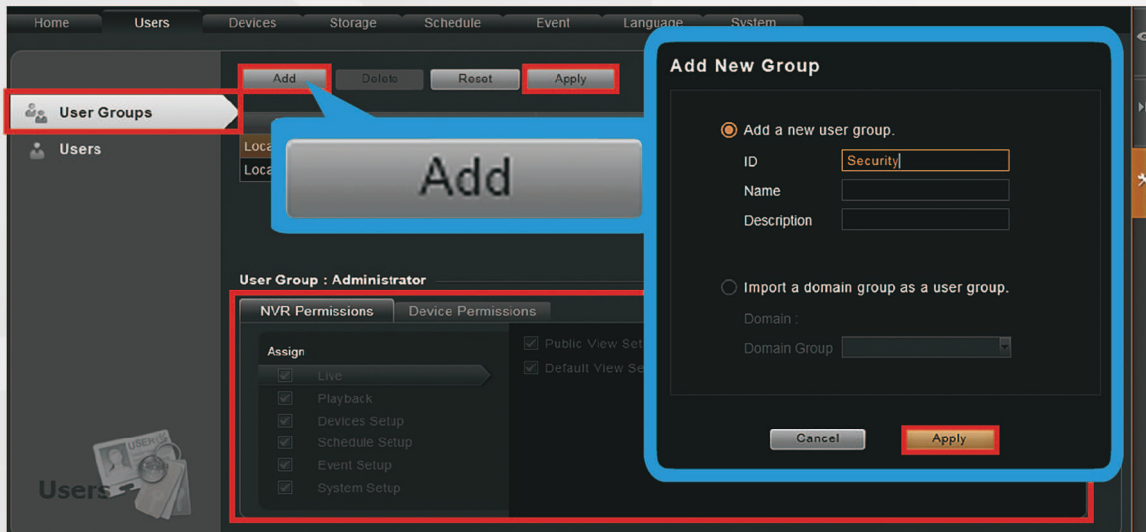
and click "Login".

07 CREATE USERS

On NVR screen, click **Setup** button to go to **Setup** page, then **Users** tab.

• Create a User Group

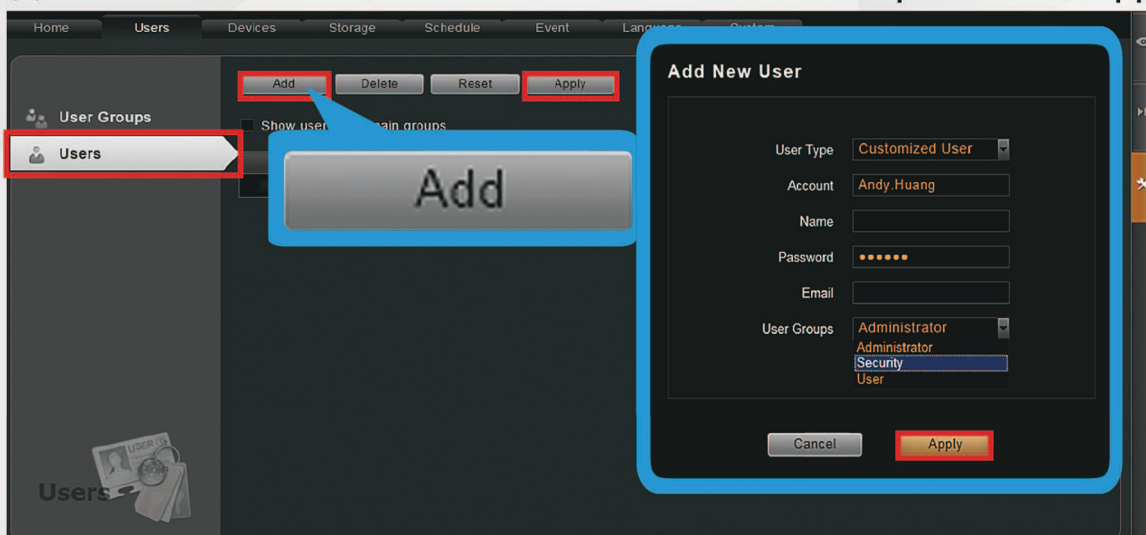
- (1) Select "**User Groups**", click "**Add**". (2) Enter group ID and click "**Apply**".
- (3) Configure user group permissions and click "**Apply**".



The screenshot shows the NVR's 'Users' tab. The 'Add' button is highlighted with a blue callout. The 'Add New Group' dialog is open, showing the 'Add a new user group' option selected. The 'ID' field contains 'Security'. The 'Apply' button is highlighted with a red box. A blue callout points to the 'Apply' button. A blue callout points to the 'Add' button. A blue callout points to the 'Add' button. A blue callout points to the 'Add' button.

• Create a User Account

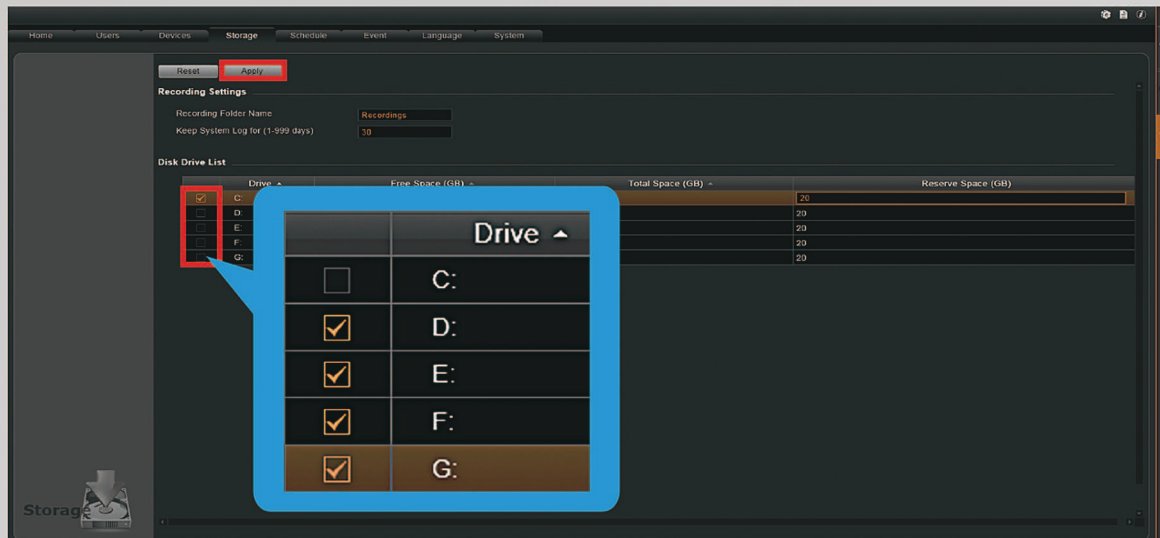
- (1) Select "**Users**", click "**Add**".
- (2) Enter user's Account, Password and select its User Group, and click "**Apply**".



The screenshot shows the NVR's 'Users' tab. The 'Add' button is highlighted with a blue callout. The 'Add New User' dialog is open, showing the 'Customized User' option selected. The 'Account' field contains 'Andy.Huang'. The 'User Groups' dropdown is set to 'Administrator'. The 'Apply' button is highlighted with a red box. A blue callout points to the 'Add' button. A blue callout points to the 'Add' button. A blue callout points to the 'Add' button. A blue callout points to the 'Add' button.

08 SELECT STORAGE DISKS

- (1) Go to **Setup** page then **Storage** tab.
- (2) On **Disk Drive List**, deselect **C Drive**, and select other storage disk(s) you have installed.



- (3) Click **"Apply"**.

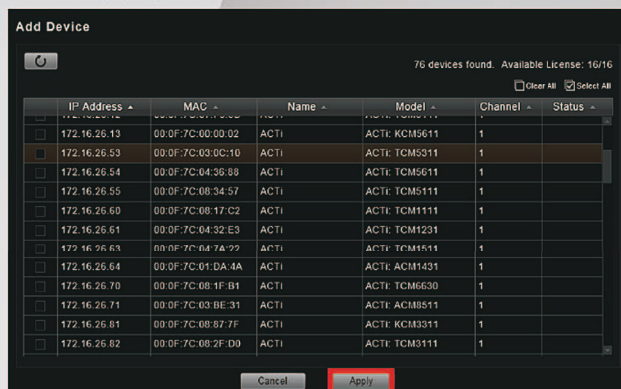
09 ADD DEVICES

- (1) Go to **Setup** page then **Devices** tab.
- (2) On **Devices** tab, click **"Add Device"**.

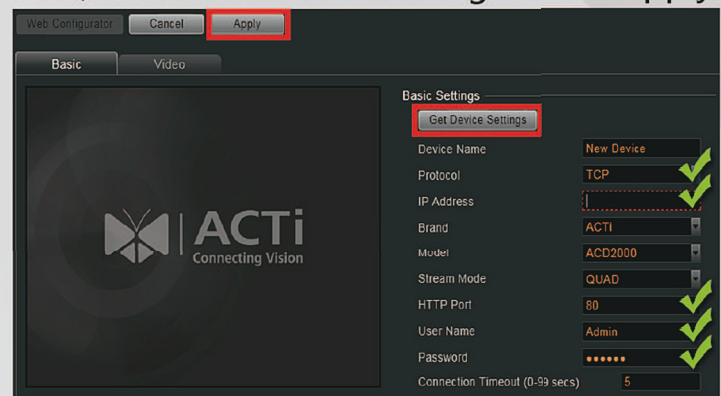


- (3) Choose a search method based on network setting.

• **In LAN:**
Select **"Search Devices"** to auto-search the network. Choose your desired devices and click **"Apply"**.

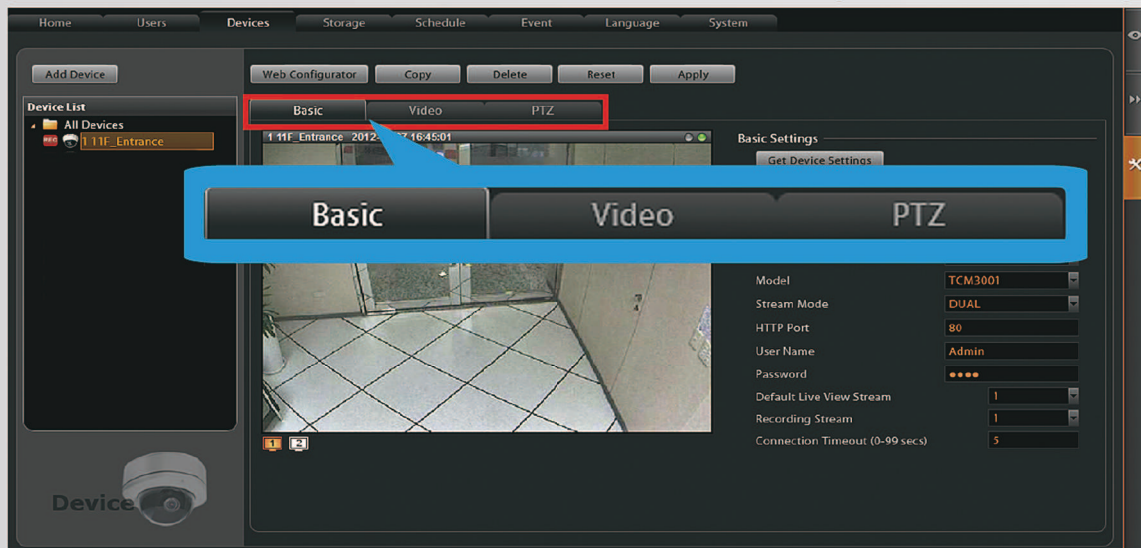


• **Cross-LAN or WAN:**
Select **"Add Device Manually"**, fill in **Protocol**, **IP Address**, **Account**, **Password**, and **HTTP Port**, click **"Get Device Settings"** then **"Apply"**.



10 SET CAMERAS

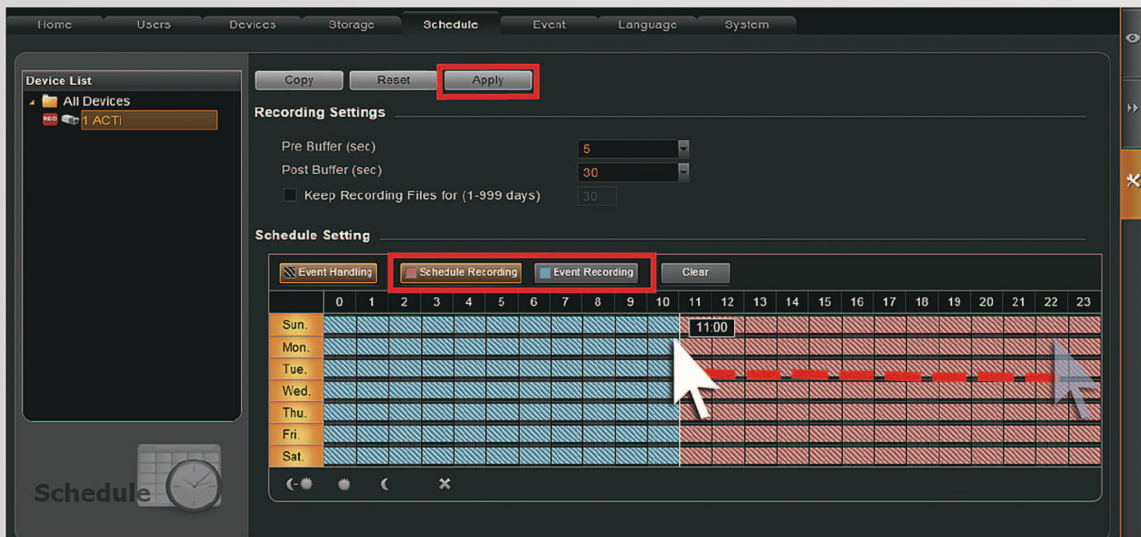
- (1) Go to Setup page then Devices tab. Choose the device from Device List.
- (2) Enter Basic / Video / PTZ / Preset Tour tabs to configure camera settings.



11 SET RECORDING SCHEDULE

NVR server automatically starts full-time schedule recording as soon as a device is added in **Step 09**.

- (1) Go to Setup page then Schedule tab. Select the device from Device List.
- (2) Choose recording mode - **Event Recording** or **Schedule Recording**
 - Event Recording: Records events upon being triggered by motions or external inputs.
 - Schedule Recording: Records continuously during the scheduled session.









(3) Drag on time table.

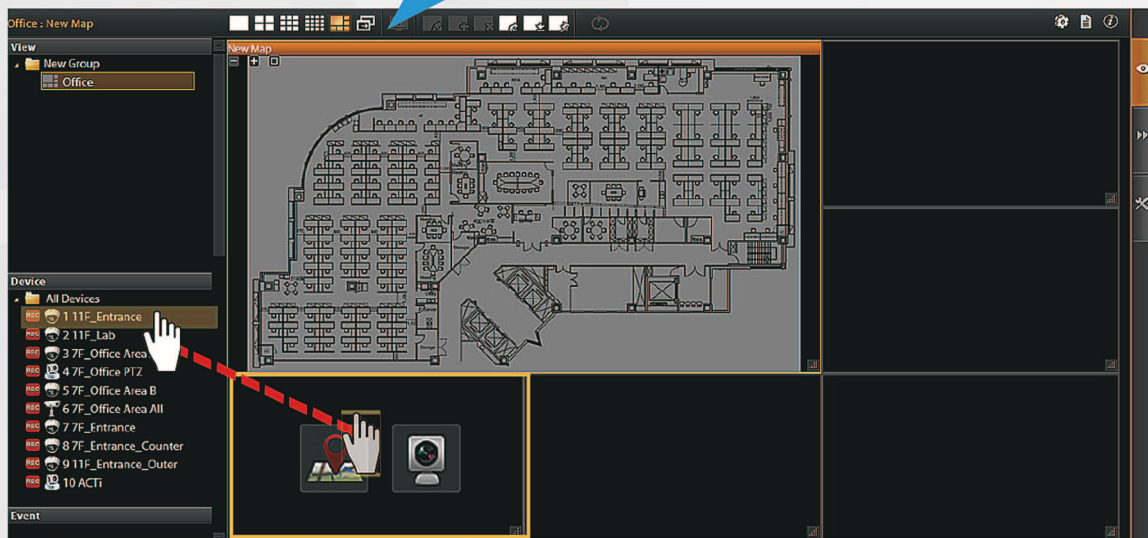
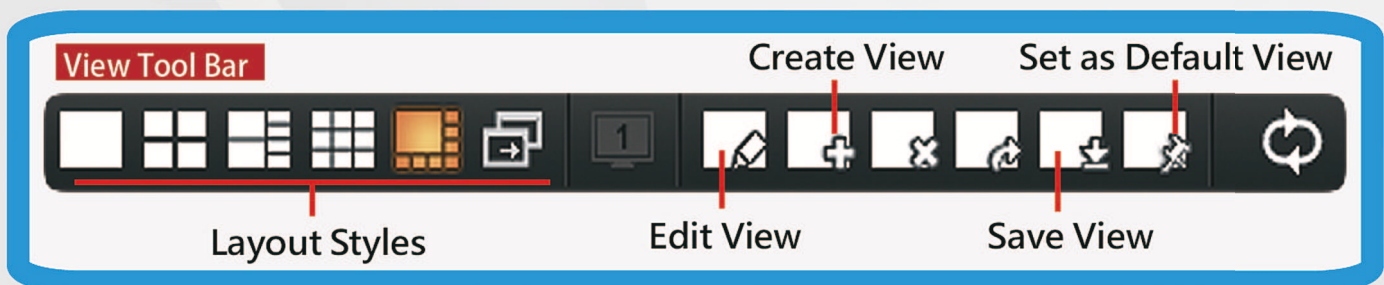
(4) Click "Apply".

Technical Support

If you have any questions during system installation, please feel free to contact our engineers via our Customer Help Desk platform <http://www.acti.com/CHD>

12 CUSTOMIZE LAYOUTS

- (1) Go to **Live View** page. On top of the screen, click  on **View Tool Bar** to create a new layout, then click  to enter edit mode.
- (2) Select a layout style.
- (3) •To add a camera view:
Pull a device from **Device List** to a channel.
•To add a map view:
Select a channel and click , upload the map, drag the lower right corner  to adjust channel size.
- (4) On **View Tool Bar**, click  to save the view.
- (5) Click  to set this view as default live view.



13 VALIDATION



- (1) To check live streaming, go to **Live View** page, select a view from **View List** or a camera from **Device List**.



- (2) To check recording, go to **Playback** page, select certain view from **View List** or a camera from **Device List**. Drag on the time bar to see the recorded video.